



TOWNSHIP HIGH SCHOOL DISTRICT 211

INVITATION TO BID AND BID FORM

BID #: 2015 FOR: CARPET DUE: MARCH 3, 2020

FROM:

(Name of Company)

Table with 6 columns: Base Bid 1 Total Price installed by June 30, 2020, Price per sq yd to add or subtract up to 10%, Base Bid 2 Total Price installed by June 30, 2020, Price per sq yd to add or subtract up to 10%, Base Bid 2 Total Price installed by Aug 3, 2020, Price per sq yd to add or subtract up to 10%. Rows for PHS, FHS, CHS, SHS, HEHS.

REMINDER: YOUR BID MUST BE SUBMITTED IN A SEALED ENVELOPE CLEARLY MARKED:

BID #2015

CARPET

BIDS MUST BE RECEIVED AT THE ADDRESS BELOW NO LATER THAN: MARCH 3, 2020 at 11:00 a.m.

I have examined the specifications and instructions included herein and agree, provided I am awarded a contract within 90 days of bid due date, to provide the specified items and/or services or work as described in the specifications and instructions for the sum shown in accordance with the terms stated herein. All deviations from specifications and terms are in writing and attached hereto.

COMPANY NAME SIGNED

ADDRESS TITLE

CITY, STATE & ZIP CODE DATE

TELEPHONE NUMBER

EMAIL ADDRESS - This information is necessary for you to receive future bid proposals.

* If NO BID is your response, please complete and return the Courtesy "No Bid" Response Questionnaire.

Submit your sealed bid to:

John V. Pahlman, Director of Facilities & Purchasing
Township High School District 211
1750 South Roselle Road
Palatine, Illinois 60067-7336
847-755-6600

SPECIFICATIONS – CARPET BID # 2015
BID 1 TO BE COMPLETED BY JUNE 30 AND BID 2 BY AUGUST 3, 2020

Bidders are to furnish based on the square yardage for each building location for each bid – including removal of existing, prepping of floors, and installation of the following carpet.

Required Base is Johnsonite 4” vinyl cove

Required Adhesive is Mohawk EnPress carpet tile pressure sensitive adhesive

MOHAWK LEARN & LIVE COLLECTION – NO SUBSTITUTION FOR THIS PRODUCT

Brand	Mohawk
Size	24” x 24”
Dye Method	Solution dyed
Construction	Tufted
Surface Texture	Level Heathered Loop
Density	1/12” (47.00 rows per 10 cm)
Backing Material	Eco Flex NXT
Fiber Type	Duracolor TRICOR Premium Nylon
Fiber/Soil Release Technology	Eco Century Soil Protection
Installation Method	Swipe right, rise up, side stripe, quarter turn
Warranty	Lifetime Limited Warranty

Delivery Point: All District 211 schools

Product type/ Design/ Color

PHS – Side Stripe 963 Heritage; #20 Charcoal cove
FHS – Swipe right 969 Brookwood; #40 black cove
CHS – Swipe right 565 Blue Ridge; #18 navy blue cove
SHS – Side Stripe 963 Heritage; #20 charcoal cove
HEHS – Side Stripe 562 City Park; #32 pebble cove

Dates/times vendor can work in buildings before, during, and after summer school. Last day of summer school is 7/15/20:

Palatine: 5-26 to 5/29, 6/1-7/15 1:30-11:00 p.m., 7/16-8/3 1st & 2nd Shift

Fremd: 5-26 to 5/29, 6/1-7/15 1:30-11:00 p.m., 7/16-8/3 1st & 2nd Shift

Conant: 5-26 to 5/29, 6/1-7/15 1:30-10:00 p.m., 7/16-8/3 1st & 2nd Shift

Schaumburg: 5/26/20 to 8/3 – 1st shift, 2nd shift (closed all summer)

Hoffman Estates: 6/1-7/15 1:30-11:00 p.m., 7/16-8/3 1st & 2nd Shift

***Must make work area safe nightly for next day of summer school. There is no summer school on Fridays.**

Building maps show required areas for carpet installation. Contractor is responsible to measure all areas.

All product **MUST** be delivered and installed no later than June 30, 2020 for BID 1, and by August 3, 2020 for BID 2. **Must follow manufacturer instruction for installation of carpet.**

Contractor is responsible for scheduling installation thru the building & grounds managers.

Contact information for Township High School District 211 schools:

Building & Grounds Managers

1. Al McAllister Palatine High School, 1111 N Rohlwing Rd., Palatine 60074
amcallister@d211.org 847-755-1685
2. Steve Balsley Fremd High School, 1000 S Quentin Rd., Palatine 60074
Sfbalsley@d211.org 847-755-2685
3. Dave Grelyak Conant High School, 700 E Cougar Trail, Hoffman Estates 60169
dgrelyak@d211.org 847-755-3685
4. John Woods Schaumburg High School, 1100 W Schaumburg Rd., Schaumburg 60194
jwoods@d211.org 847-755-4685
5. Doug Schippel Hoffman Estates High School, 1100 W Higgins Rd., Hoffman Estates 60169
dschippel@d211.org 847-755-5685

Contact Dave Grelyak for any additional questions 847-755-6732 or dgrelyak@d211.org



Carpet Tile & Plank Direct Glue Down

INSTALLATION

EcoFlex® ICT
EcoFlex® NXT
EcoFlex® AIR
EcoFlex® NXT Matrix

160 South Industrial Blvd.
Calhoun, GA. 30701
MohawkGroup.com

Technical Services Department
508 East Morris St.
Dalton, GA 30721
800.833.6954
product_tech@mohawkind.com



This information, offered as a customer service, is based on Mohawk Group's engineering test and field experience. It is intended for installers with professional experience to be used at their discretion and risk. Mohawk Group does not guarantee results and assumes no liability in connection with these instructions

Site Conditions

Concrete slabs must be tested for moisture by the current version of ASTM F2170. (Consult CRI 104 part 6.2 for standard test method for determining relative humidity on concrete floor slabs using In-Situ Probes.) Below are the requirements for each Mohawk Group Carpet Tile products.

Ecoflex NXT & Ecoflex MATRIX

The following applies to new pour concrete:

On Grade:

An ASTM E-1745, Class B minimum vapor barrier must be in place and directly in contact with the concrete

- If reading is below 95% RH, Enpress adhesive or FlexLok tabs only
- If reading exceeds 95% RH, and no signs of visible moisture are present, Mohawk FlexLok tabs are an approved installation method. For thorough guidelines regarding site conditions, floor prep and installation consult the complete set of FlexLok installation instructions.

Above Grade:

- If reading is below 95% RH, Enpress adhesive or FlexLok tabs only
- If reading exceeds 95% RH, and no signs of visible moisture are present, Mohawk FlexLok tabs are an approved installation method. For thorough guidelines regarding site conditions, floor prep and installation consult the complete set of FlexLok installation instructions.

The following applies to renovation:

On Grade:

An ASTM E-1745, Class B minimum vapor barrier must be in place and directly in contact with the concrete

- If reading is below 95% RH, Enpress adhesive or FlexLok tabs only
- If reading exceeds 95% RH, and no signs of visible moisture are present, Mohawk FlexLok tabs are an approved installation method. For thorough guidelines regarding site conditions, floor prep and installation consult the complete set of FlexLok installation instructions.



Above Grade:

- If reading is below 95% RH, Enpress adhesive or FlexLok tabs only
- If reading exceeds 95% RH, and no signs of visible moisture are present, Mohawk FlexLok tabs are an approved installation method. For thorough guidelines regarding site conditions, floor prep and installation consult the complete set of FlexLok installation instructions.

The alkalinity or pH in a concrete slab must be tested by the current version of ASTM F710 for a glue-down installation. If pH exceeds 12, consult Mohawk Group Technical Services at 800.833.6954

Ecoflex NXT AIR

The following applies to new pour concrete:

On Grade:

- No pH or RH testing required when using Enpress Adhesive and the following –
- No Sign of visible moisture
- Slab is older than 30 days

An ASTM E-1745, Class B minimum vapor barrier must be in place and directly in contact with the concrete

Above Grade:

- No pH or RH testing required when using Enpress Adhesive and the following –
- No Sign of visible moisture
- Slab is older than 30 days

The following applies to renovation:

On Grade:

- No pH or RH testing required when using Enpress Adhesive and the following –
- No Sign of visible moisture
- An ASTM E-1745, Class B minimum vapor barrier must be in place and directly in contact with the concrete

Above Grade:

- No pH or RH testing required when using Enpress Adhesive and the following



- No Sign of visible moisture

Ecoflex ICT

The following applies to new pour concrete:

On Grade:

An ASTM E-1745, Class B minimum vapor barrier must be in place and directly in contact with the concrete

- If reading is below 80% RH, Enpress or FlexLok Tabs
- If reading is between 80-90%, Optiseal is required with Enpress adhesive or with FlexLok Tabs
- If reading exceeds 90% RH, consult Mohawk Group Technical Services at 800.833.6954

Above Grade:

- If reading is below 80% RH, Enpress adhesive or FlexLok Tabs
- If reading is between 80-90%, Optiseal is required with Enpress adhesive or with FlexLok Tabs
- If reading exceeds 90% RH, consult Mohawk Group Technical Services at 800.833.6954

The following applies to renovation:

On Grade:

An ASTM E-1745, Class B minimum vapor barrier must be in place and directly in contact with the concrete

- If reading is below 80% RH, Enpress adhesive or FlexLok Tabs
- If reading is between 80-90%, Optiseal is required with Enpress adhesive or with FlexLok Tabs
- If reading exceeds 90% RH, consult Mohawk Group Technical Services at 800.833.6954

Above Grade:

- If reading is below 80% RH, Enpress adhesive or FlexLok Tabs
- If reading is between 80-90%, Optiseal is required with Enpress adhesive or with FlexLok Tabs
- If reading exceeds 90% RH, consult Mohawk Group Technical Services at 800.833.6954

The alkalinity or pH in a concrete slab must be tested by the current version of ASTM F710 for a glue-down installation. If pH exceeds 9, on new pour or renovation, consult Mohawk Group Technical Services at 800.833.6954



Hydrostatic Pressure

If the concrete slab is visibly wet, or experiencing hydrostatic pressure, the cause of the moisture should be properly addressed prior to installation of floor covering. Consult Mohawk Group Technical Services at 800.833.6954

Temperature

The floor and room temperature must be acclimated by maintaining the temperature between 65°F and 85°F, and the humidity between 30% and 65%, for at least 48 hours before and during installation. In addition, the carpet and adhesive should be stored under these conditions for at least 24 hours before installation. The installation site must be acclimated with controlled temperature and humidity.

When the installation is complete, the jobsite must be maintained at normal service temperature and humidity.

Floor Preparation and Existing Adhesives

Pre-existing adhesive ridges should be mechanically or hand scraped to a residue to create a smooth flat surface before installing our carpet products. Mohawk cannot be held liable for issues arising from excess adhesive left on the substrate; this includes, but is not limited to, bond failures between encapsulated / skim coated old adhesive and patching compounds used in place of removing adhesive (mechanically or hand scraped) to a smooth surface.

Pre-existing adhesives, once scraped smooth, should be treated as follows:

Ecoflex NXT and Ecoflex Matrix:

No further treatment required unless old adhesive shows signs of plasticizer migration, in which case we recommend applying OptiSeal to the substrate.

Ecoflex Air:

No further treatment required

Ecoflex ICT:

OptiSeal must be applied to the substrate after proper removal of adhesive

- When active non-asbestos containing cut back adhesive, or any incompatible adhesive is present, the existing adhesive should be scraped smooth with only residual adhesive remaining in the pores of the substrate and properly sealed with OptiSeal when installing Ecoflex ICT, Ecoflex NXT or Ecoflex Matrix.
- Chemical adhesive removers cannot be used to remove old existing adhesives.
- Mechanically remove all wax, dirt, grease and paint. DO NOT use solvents to clean the floor. DO NOT use oil based sweeping compounds.



Learn & Live

Swipe Right Side Stripe Rise Up



Explore Learn & Live, a carpet tile and broadloom collection inspired by biophilic concepts of complexity and order proven to increase collaboration and creativity, reduce negative behavior and encourage social interaction. Create unique installations where complexity and order ebbs and flows through the use of accent colors.

Inspired by nature at a cellular level, Learn & Live Swipe Right carpet tile features organic patterns designed to define areas for study and thought while Side Stripe and Rise Up patterns ignite creativity and stimulation.



Side Stripe 963 Heritage (Brick Ashlar Installation)
Cover: Swipe Right 969 Brookwood, Side Stripe 963 Heritage, Rise Up 369 Roan (Vertical Ashlar Installation)



Rise Up 369 Roan (Brick Ashlar Installation)





Expand Your Brand WITH COORDINATING PRODUCTS

In addition to coordinating broadloom styles, the Learn & Live Collection is designed to work perfectly with the wide variety of colors in our Matuto Plus enhanced resilient tile.

CONSTRUCTION

The 12"x 24" tiles are designed with a versatile concrete style visual and embossed texture, especially relevant in schools, healthcare settings and retail spaces.

PERFORMANCE

The 20 mil commercial wear layer coated with M-Force™ enhanced urethane finish provides durability and cleanability with a no-polish option that allows for cost-effective maintenance.

COLOR

Mix and match across the palette of the most popular brand colors from fresh, youthful brights to an array of clean grounded neutrals.

Matuto Plus Colorways



646 Green Grass



656 Botany



556 Mega Blue



555 Blue Night



599 Deep Sea



454 Wizard



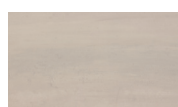
533 Red Hot



252 Outrageous Orange



131 Lemon Twist



123 Barely Beige



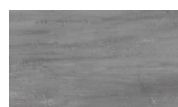
752 Nutshell



858 Bronze Blast



959 Grey Granite



927 Sonic Silver



926 Agreeable Grey



915 Frostbite



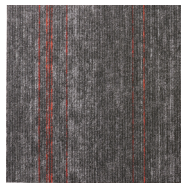


Expand Your Brand WITH COLOR POSSIBILITIES

Expand your brand and design with easy-to-order personalized color combinations in the Learn & Live collection. Simply select a branded color for the accents in Side Stripe Carpet Tile and Rise Up Carpet Tile, and elevate the design of your space to the next level. Learn & Live's color personalization program is designed for schools or companies who want to easily incorporate branded color themes into their flooring selections. Our coordinating broadloom and enhanced resilient tile products allow even more opportunity to create wayfinding within a school or workplace. Now you can learn & live, colorfully!

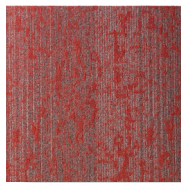
SIDE STRIPE CARPET TILE

Select your own accent stripe in the pattern for a flexible low minimum.



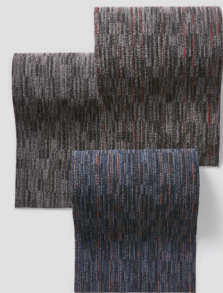
RISE UP CARPET TILE

Choose a personalized color for the saturated background of Rise Up for a flexible low minimum.



Expand Your Options with Interplay Stripe Broadloom

Since the Learn & Live collection offers full system solutions for all your flooring needs, expand your branding and wayfinding options with Interplay Stripe coordinating broadloom. Interplay Stripe Broadloom is a versatile geometric pattern with subtle accent stripes that can be personalized to coordinate with any brand for a flexible low minimum.





Trust the System

CARPET TILE SOLUTIONS

Mohawk Group's Learn & Live collection offers worry-free solutions that feature innovative product constructions and enhancements to deliver the highest performing flooring products available. Ease your mind with a full system solution that offers the right combination of technologies to address the most common flooring issues in demanding environments. From fiber to backing and installation, trust you have selected the most durable products that will provide years of value, performance and design.

LEARN & LIVE CARPET TILE SYSTEM SOLUTION

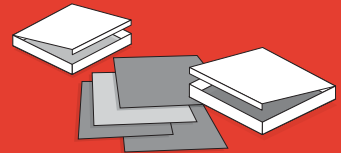
01 FIBER

Building upon the trusted Duracolor promise, new **Duracolor® Tricolor** delivers unsurpassed stain resistance, colorfastness, durability, color clarity and enhanced soil performance.



02 DESIGN

The Learn & Live collection is crafted with the mergeability of various dye lots, so ongoing maintenance and selective tile replacement will keep your flooring installation looking great for many years.



03 BACKING

EcoFlex NXT is a polyolefin carpet tile backing that incorporates a minimum of 35% pre-consumer recycled content and is Declare Red List Free. In addition, this backing can be installed on sub floors with up to 99% RH.*



04 ADHESIVE FREE

FlexLok tab system virtually eliminates harmful VOC's with an easy-to-use, odorless dry installation that replaces traditional wet spread adhesive methods. FlexLok tabs can be installed with no moisture testing, provided no signs of visible moisture are present.*



*See Mohawk Group official warranty, technical and installation documents for further details at www.mohawkgroup.com

Random and Mergeable Carpet Tile

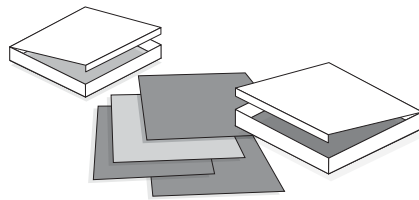
With mergeable dye lot carpet tile from Mohawk Group, you can confidently replace damaged carpet tiles without impacting the overall look of your space. In fact, carpet tile is great for high-traffic areas that require periodic tile replacement due to staining or excessive wear and tear. The Learn & Live collection is crafted with the mergeability of various dye lots, so ongoing maintenance and selective tile replacement will keep your flooring installation looking great for many years.

LEARN & LIVE RANDOM AND MERGEABLE CARPET TILE INSTALLATION

- Flexibility to install tiles from multiple dye lots
- Minimizes purchasing large quantities of attic stock
- Easy and quick selective replacement of tiles
- Tiles are readily available for future renovation or expansion

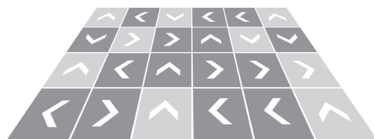
NEW RANDOM AND MERGEABLE CARPET TILE INSTALLATION

To achieve desired results of random and mergeable carpet tile, it is important to follow the instructions for both new or replacement installations. A multi-directional install method is recommended for optimal results.



Variation

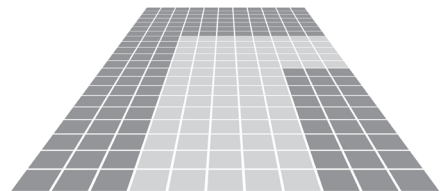
Mix and merge new tiles from multiple dye lots and cartons. Dye lots vary, so combine and mix carpet tiles from different cartons.



Randomize

Apply only a multi-directional installation method to achieve optimal results across multiple dye lots.

REPLACEMENT RANDOM AND MERGEABLE CARPET TILE INSTALLATION



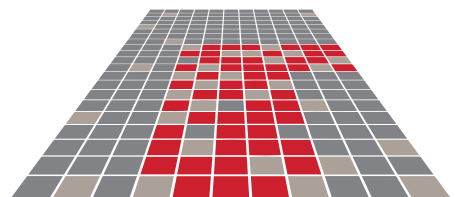
WEAR PATTERN

Remove

Remove damaged or excessively worn tiles.

Combine

After removing damaged tiles, combine new tiles from multiple dye lots and cartons.



NEW TILE
RELOCATED TILE FROM ORIGINAL INSTALL

Blend

Blend and combine old and new tiles, then reinstall with a multi-directional method.



Duracolor® Tricolor FIBER

Building upon the trusted Duracolor promise, new Duracolor Tricolor delivers unsurpassed stain resistance, colorfastness, durability, color clarity and enhanced soil performance. Carpet made with Duracolor® Tricolor is recyclable, easy to maintain and features inherent stain resistance with water-only stain removal.



FOREVER STAIN FREE

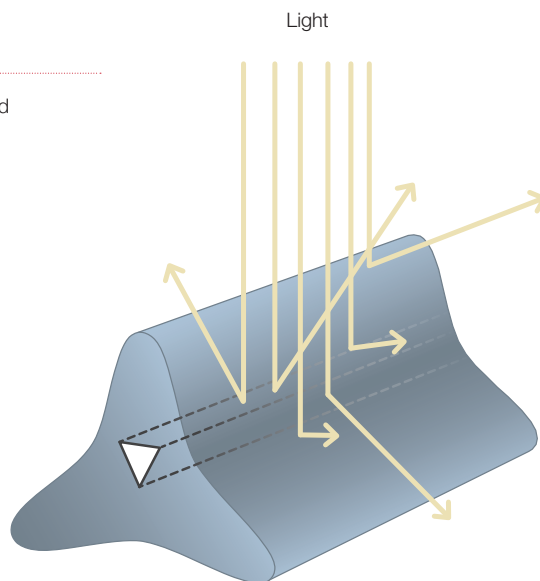
- The high-performance shape of the modified delta improves resilience and reduces surface wear of carpet
- Duracolor® Tricolor Fiber has a negative charge that repels 99% of negatively charged, common staining substances
- Single Triangular Hole provides the best soil hiding capability and controlled light diffusion for clearer, brighter colors
- 96% of all common stains removed with just water
- Passes AATCC Test Method 175 combined with pre-abrasion meeting GSA requirements for stain resistance

FOREVER BEAUTIFUL

- Unsurpassed colorfastness to light and atmospheric contaminants so colors won't fade
- Unmatched design flexibility without compromising color retention or stain resistance

FOREVER SUSTAINABLE

- Made with a minimum of 30% recycled content**
- No Chemicals required: 96% of all common stains clean with just water
- Declare Red List Free: Duracolor fiber is Declare Red List Free in accordance with the Living Building Challenge
- Lasts Longer: Product life is extended, reducing the impact to your bottom line and to the environment
- Recyclable through Mohawk's ReCover Program



The Power of the Triangle: The shape and placement of the fiber's central hollow core delivers optimal light refraction while preserving color clarity.

* See Mohawk Group official warranty documents for further details at mohawkgroup.com

**Recycled content claim third party verified by SCS Global Services

Specifications

Swipe Right QL418 / GT418
Side Stripe QL419 / GT419
Rise Up QL420 / GT420

DESIGN

Size	24" x 24" (.6096m x .6096m)
Surface Appearance	Level Heathered Loop
Fiber Type	Duracolor® Tricor Premium Nylon
Dye Method	Solution Dyed
Installation Methods	
Swipe Right, Rise Up	Quarter Turn / Monolithic / Brick Ashlar / Vertical Ashlar / Multi-Directional
Side Stripe	Quarter Turn / Brick Ashlar / Vertical Ashlar / Multi-Directional
Colors Available	
Swipe Right	4
Side Stripe, Rise Up	8

PERFORMANCE

Construction	Tufted
Gauge	1/12" (47.00 rows per 10cm)
Stain Release Technology	Permanent, Built into the Fiber
GSA Stain Release Technology	Passes
Soil Release Technology	EcoSentry Soil Protection
Backing Material	EcoFlex NXT
Flammability	ASTM E 648 - Class 1 (Glue Down)
Smoke Density	ASTM E 662 - Less than 450
Static Propensity	AATCC - 134 Under 3.5 KV

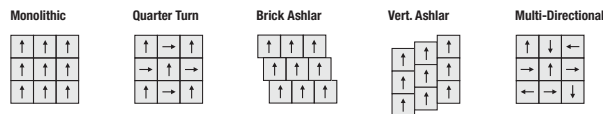
SUSTAINABILITY

Certification	Declare Red List Free
Indoor Air Quality	Green Label Plus Certified #1171
NSF 140	Gold

SERVICE

Warranties	Lifetime Limited Carpet Tile Warranty, Lifetime Limited Duracolor Stain Warranty, Lifetime Static
------------	---

Installation Instructions:



Mohawk Group warrants its adhesives for the life of the original installation only when a Mohawk Group style (product) is installed. Mohawk's floor preparation procedures must be followed to ensure that the substrate has been prepared properly. Failure to use Mohawk Group adhesives or to follow Mohawk's floor preparation procedures will void all lifetime adhesive warranties. Please contact your local Sales Representative for installation guidelines.

These patterns contain inherent characteristics which may result in pattern run off and/or pattern appearance variations at the seams or tile edges (darker or lighter pattern lines). These characteristics are inherent in the patterns and are not manufacturing defects. Consideration to these characteristics should be given when selecting an installation method.

Chair pads are recommended under office chairs with roller casters to preserve appearance retention, act as a deterrent toward delamination and to prevent premature or accelerated wear. Walk-off tiles from the Tuff Stuff II Collection are recommended at entryways to reduce soiling.

Duracolor by Mohawk Stain Resistant System passes AATCC Test Method 175 combined with pre-abrasion meeting GSA requirements for stain resistance. Under GSA requirements stain resistant carpets must score no less than 8.0 (10.0 is best) on the AATCC Red 40 Stain Scale. Carpet samples must first be exposed to 100 revolutions of the

Taber abrader (1,000-gram weight per H-18 wheel) and then the abraded area must be stain tested using AATCC tested using AATCC test method 175.

Mohawk Group is providing this architect folder for the purpose of promoting our commercial business. This folder and its samples shall remain the property of Mohawk Group. Color may vary from dye lot to dye lot. Substitution of material may be made due to improved technology, supply limitations or other factors. The performance of this product is not affected by such variations.

For current and complete specifications please visit www.mohawkgroup.com



877-3RE-CYCL

Produced with recycled materials

Mohawk Group

Mohawk Group
160 South Industrial Blvd.
Calhoun, GA. 30701
1-800-554-6637
mohawkgroup.com

GT418 SAF0009347



- Fill cracks larger than 1/16" wide with a cement-based patching compound. The floor must be flat to within 1/8" in 10 feet. Use leveling compound when required. Patched areas may need to be primed with an approved primer such as PrimeCoat. (Consult patch manufacturer for requirements.) DO NOT install over resin or silicate based curing compounds.
- Floor tiles containing asbestos, any adhesive possibly containing asbestos, or other floor coverings containing asbestos require special preparation, handling and removal procedures. Consult the appropriate local or state authorities or the Resilient Floor Covering Institute before disturbing any suspected asbestos-containing material
- When installing carpet tiles over raised access floor panels, start installation by overlapping the access panel joints to prevent the seams of the tiles from lining up with the access panel joints. Additionally, all access panels should be sound, level and edges firmly secured to the raised flooring pedestals.
- Mohawk will not be responsible for any damages arising out of the failure to follow these guidelines. Mohawk Group is not responsible for any product failure due to improper floor preparation and/or improper installation including the use of un-authorized adhesive.

Floor Priming

- Concrete: Prime if floor is extremely porous or has excessive dust. Note: Any existing sealer or primer must be tested for compatibility with Mohawk Group's adhesive. Terrazzo, Marble, Vinyl Tile (VAT or VCT), Linoleum and other smooth nonporous surfaces do not require priming. Damp mop only. If patching is required on these surfaces, prime the patched areas if required by patch manufacturer.
- Gypcrete or substrates with excessive dust must be cleaned and then primed with a product such as PrimeCoat to ensure proper bonding.
- Bond Test must be performed over concrete substrates with unidentified sealers or primers: Adhere a small area of 2 to 3 feet of carpet and allow it to dry completely. Let it set for 24 hours. If the adhesive is bonded tightly, proceed with installation.
- Wood substrates are required to be structurally sound, flat, dry and securely anchored with 3/4" minimum thickness. Substrates, such as plywood, OSB or other materials must be flooring grade (APA approved) and installed according to manufacturer specifications. Irregularities, imperfections and joints must be properly patched and prepared. Primer such as PrimeCoat is required over any wood substrate.



Installation

Required Equipment

The following items may be purchased from a local carpet workroom supplier:

Razor Blades	Straight Edge
Mohawk Group EnPress Adhesive	Framing Square
Floor Scraper	Tape Measure
Razor Knives	Chalk Line
Scissors	Cement-based Patching Compound
75 lb. Roller or 100 lb. Roller	Heave Duty Frame Paint Roller with 3/8" Nap Roller OR a 1/16" x 1/32" U-Notch Trowel

Product Inspection

Make sure to inspect Mohawk Group carpet tiles for dye lot, style, quality and shipping damage prior to installation. Do not install any product that has visible problems. No claims will be allowed for visible defects after the carpet has been cut and installed. For concerns, please contact Technical Services at 800.833.6954.

Site Layout

1. The starting point in a carpet tile installation must be as near to the center of the room as possible and must be positioned to utilize the largest perimeter cut module size.
2. Snap a chalk line parallel to one major wall bisecting, the starting point. It will be necessary to offset the center chalk line to assure perimeter modules will be at least half size.
3. A second chalk line must be snapped from the starting point at 90° to the first line. This can be accomplished using a 6-8-10 or larger triangle, depending on the room size. (See below). Meters or feet will be used to lay out the triangle in these proportions. A framing square can also be used.

Pallet and Box Sequencing

It is very important to install carpet tiles in the order they were manufactured. This is easily accomplished by selecting pallets in sequential order.

Adhesive Application

EnPress Adhesive Application

- EcoFlex ICT, NXT, Matrix and AIR require EnPress Adhesive.
- The use of Mohawk Group branded adhesives is required to ensure optimum results and are the only approved adhesives that are authorized by the Mohawk Group. The Mohawk Group will not be responsible for damage caused by a failure to use our branded adhesives.
- The adhesive must be applied in a FULL SPREAD – NOT grid.



- Ensure the proper amount of adhesive is applied to the sub-floor. Prior to installation, mark off a small area of the sub-floor and determine the adhesive spread rate. This will allow you to determine the proper coverage level and amount of pressure to apply to the roller during installation.
- On smooth surfaces, be careful not to apply too little adhesive. Just because a surface is smooth and / or sealed, it still requires a proper coating of adhesive.
- Allow the adhesive to dry to a clear and tacky state. Tiles must be installed immediately after adhesive has dried. To determine if the adhesive is dry, press finger into adhesive. When dry, adhesive will not transfer to finger.

Set-up time is approximately 45 to 90 minutes depending on the climate and humidity.

Tile Installation Methods

Before you begin the installation, consult product specifications to determine which installation formats are approved. Shown below are some common installation formats.

Ashlar Formats

In the Ashlar installation formats, each row of carpet tiles is shifted 8", either in a brick format or vertically (see diagrams above). This is a three-step process, i.e. each successive row of tiles must be offset one-third the length of the tile. It is not acceptable to shift the tiles only one-half the length of the tiles (two-step process). This installation method maintains the random appearance of the carpet tiles, eliminating line-on-line or dark-on-dark effects that can create a skewed look in the finished installation.

Please note: Carpet tile products installed in the Ashlar format will not have the same finished appearance as the same product in a broadloom (12' width).

Multi-Directional Format (Follow No Order)

Tiles are to be placed without being concern for the arrow direction (random). Mixing tiles from various boxes during installation will further blend color and design elements. This process is essential for achieving optimal aesthetics.

Plank Tile Installation Methods

Fitting Of Tile

1. Start from the intersection point in the center of the floor. Install the tiles in one quadrant using the chalk lines as guidelines. Fill in the area between the two chalk lines using the stair step method.
2. Continue to install tiles in a stair step or pyramid pattern, starting at the center point. Check to ensure tiles are properly aligned at edges during the installation. (See figure to right).
3. Fit the tiles together by sliding them together, being careful not to trap face yarns between or under the edges of the tile. As the tile is placed into position, start with a lower corner and press the tile into place in an upward motion with the palm of the hand. The entire tile must be pressed with the installers' palm. Do not try to put both corners down at the same time. Do not jam or force the tiles too tightly.
4. Press or roll the tiles into the adhesive.



Important Tile Measurements

- When installing EcoFlex NXT, EcoFlex Matrix and EcoFlex AIR tiles, the 10-tile measurement must be between 240 3/16" to 240 7/16".
- When installing EcoFlex ICT tiles, the 10-tile measurement must be between 240" to 240 1/4".

Please note: Tiles that are trimmed against the walls, baseboards, columns, etc. must be cut flush, but not so tight that they are forced into position. Ensure that the adhesive spread is within 1/2" of walls and other obstructions.

- All carpet tiles must be rolled with a 75 lb. or 100 lb. roller.
- A seam roller can be used to blend and enhance the seams. The loop pile modules will have some yarn blossoming at the edges. The face yarn will require occasional trimming.

Cutting Border Tiles

- Cuts are made from the back. Install border tiles by placing the tile face down exactly on top of the last row of field tiles, keeping the arrows pointed in the same directions. This will be your cut tile. Using another tile, butt it against the wall, allowing it to lie on top of the tile that is to be cut. Using this tile as a reference tile, score a line on the back of the tile that is to be cut.
- Cut the tile along the reference line, being careful not to cut through the installed tile below. Install the cut tile with the cut edge along the wall.
- Use this same technique at doorways and around other objects that must be cut. The EcoFlex NXT and EcoFlex Matrix tile must have the backing cut slightly shorter by cutting the backing at a slight angle. A transition strip must be used to protect any exposed edges. Never use a cut edge as a seam.

Tiles can also be cut by measuring and cutting from the back with a straight edge and knife or by running them up the wall and cutting them with a knife or wall trimmer.

Never cut carpet over carpet, as this can result in over penetration of the blade and severed loops on the lower carpet.



Post-Installation Care

Carpet should be protected from heavy traffic and construction dust with a non-staining, building material paper. Never use plastic sheeting as it will trap moisture and prevent proper curing of the adhesive. Plastic may also leave residues that can result in rapid soiling after removal. Plywood or Masonite boards should be used when moving heavy equipment.

Stairs

Carpet tiles are NOT recommended for stairs.

Chair Pads

Chair pads are recommended for use under chairs with roller casters. Casters must be the flat round type with 5/8" to 1" width minimum. If chair pads are not used, the appearance of the carpet tile will decrease. Maintenance and / or shifting of the carpet tiles will be required more frequently when pads are not used.

Replacement Tiles

Occasionally, it will be necessary to replace damaged or heavily soiled tiles. Tiles can be replaced with on-site inventory or from another area of the installation. A difference of appearance will be noticed when the tile is replaced. However, this difference usually diminishes in a short time.



Mohawk EnPress®

Carpet Tile Adhesive

Mohawk EnPress® carpet tile pressure sensitive adhesive is specially designed to install Mohawk Group carpet tiles with:

- EcoFlex ICT, Vinyl Carpet Tile
- EcoFlex NXT, PVC-Free Carpet Tile
- EcoFlex AIR, Cushion Carpet Tile

Features & Benefits:

- Quick Tack
- Aggressive Bond
- Superior Shear Strength

EnPress® pressure sensitive adhesive is nonflammable and has low odor and “zero” calculated VOC’s, which makes it ideal for use in schools, healthcare facilities, public buildings, and anywhere odor is a concern.

EnPress® pressure sensitive adhesive is CRI Green Label Plus™ certified. This adhesive is not photochemically reactive as defined by California Rules 102 and 443 and also meets or exceeds VOC emission levels set by California SCAQMD Rule 1168. This adhesive contains MicroSept™ broad spectrum antimicrobial protection.

Carpet tile pressure sensitive releasable adhesive available for:

- EcoFlex ICT
- EcoFlex NXT
- EcoFlex AIR

Warranted up to 80% RH and 9 pH

Spread Rate:

EcoFlex ICT

- 140-160 sy per 4 gallons with a 3/8” nap roller

EcoFlex NXT

- 140-160 sy per 4 gallons with a 3/8” nap roller

EcoFlex NXT AIR

- 100-120 sy with a 1/16” x 1/32” x 1/32” U-notch trowel

Packaging:

- Available in 4 gallon pails
- 48 pails per pallet



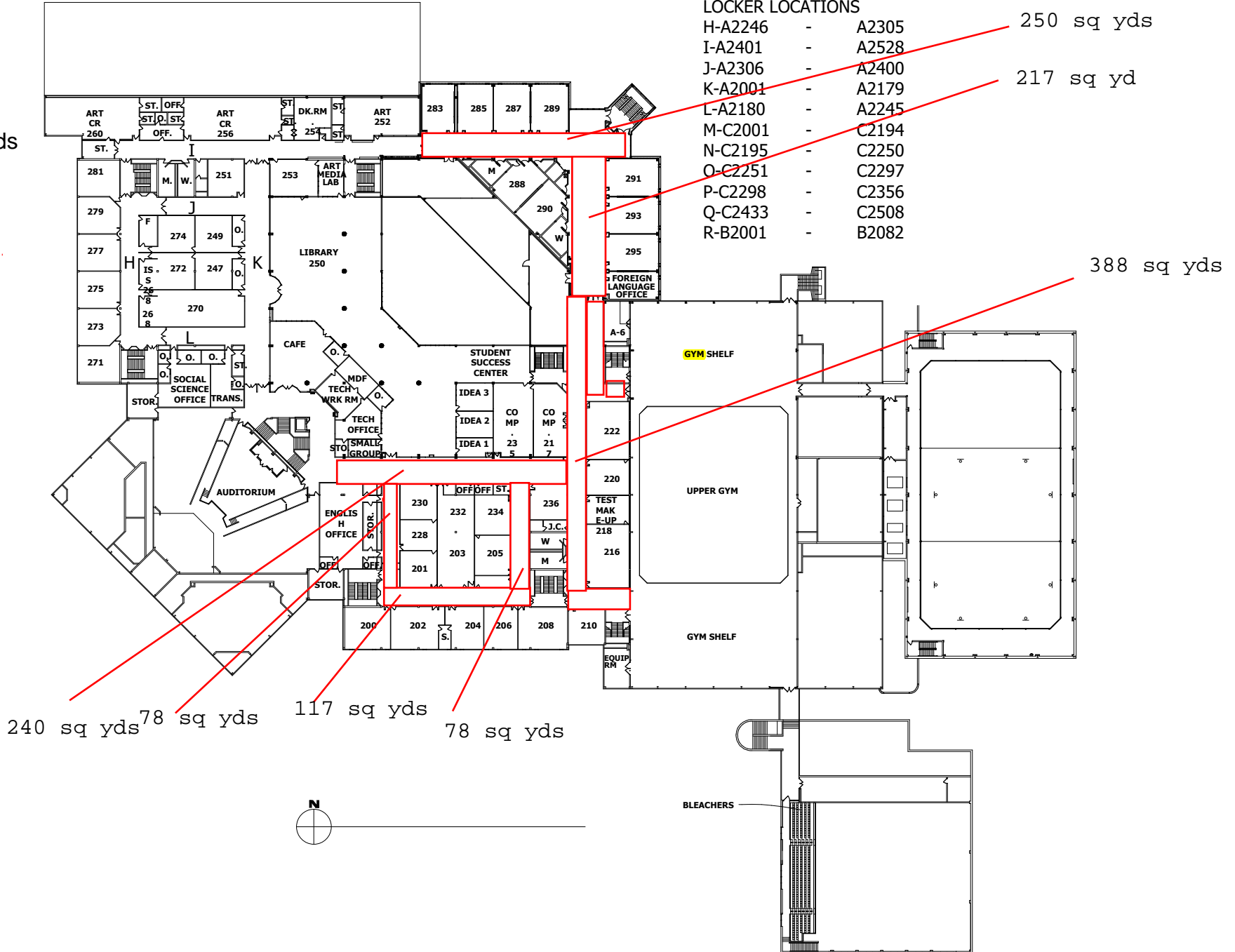
Palatine High School

Second Floor
 Approx. 1400 sq. yds
 Bid #1 .

SECOND FLOOR PLAN T-B2107 - B2184

LOCKER LOCATIONS

- H-A2246 - A2305 250 sq yds
- I-A2401 - A2528
- J-A2306 - A2400
- K-A2001 - A2179 217 sq yd
- L-A2180 - A2245
- M-C2001 - C2194
- N-C2195 - C2250
- O-C2251 - C2297
- P-C2298 - C2356
- Q-C2433 - C2508
- R-B2001 - B2082



Palatine High School

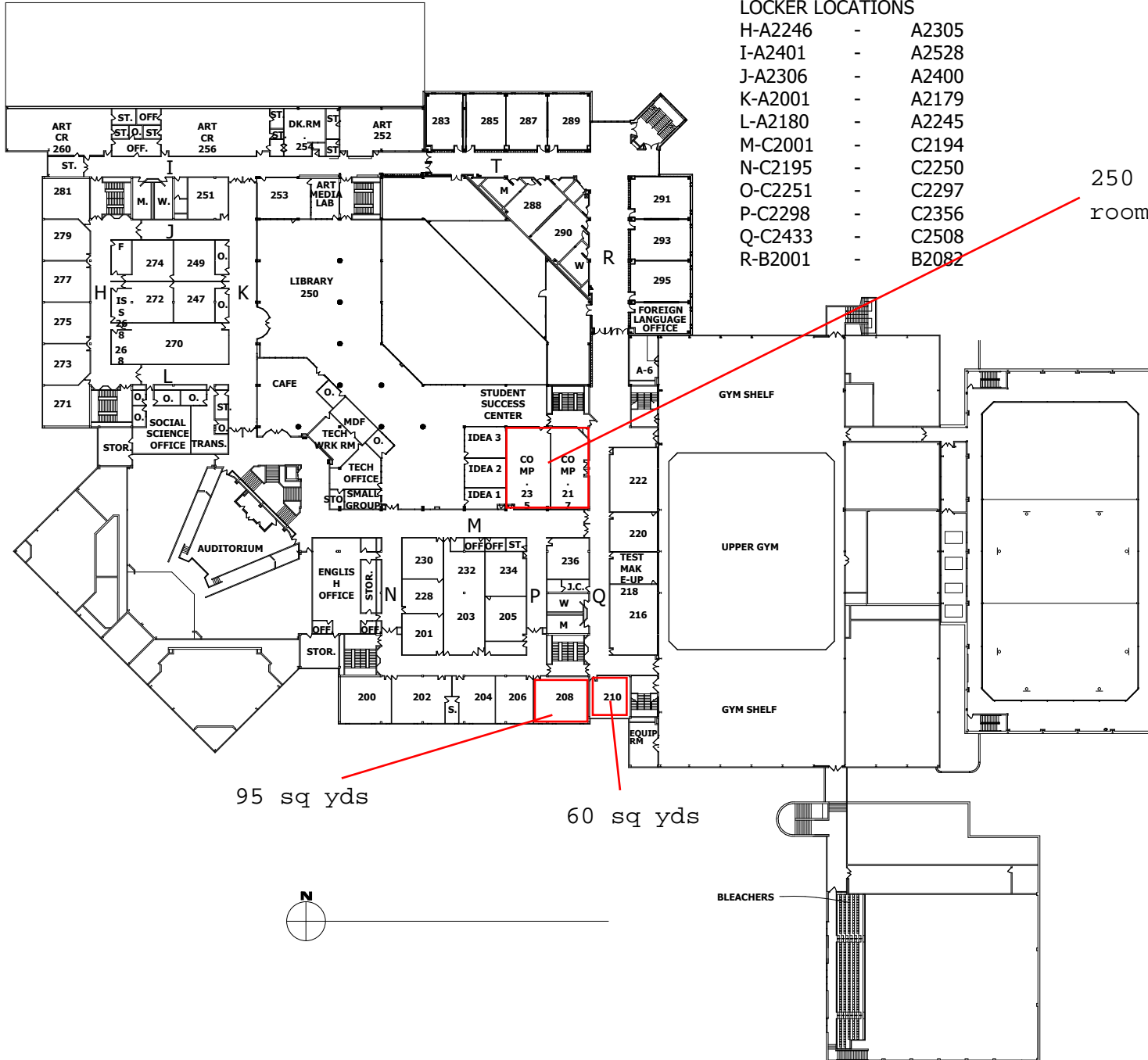
Approx. 405 sq. yds
Bid #2

SECOND FLOOR PLAN T-B2107 - B2184

LOCKER LOCATIONS

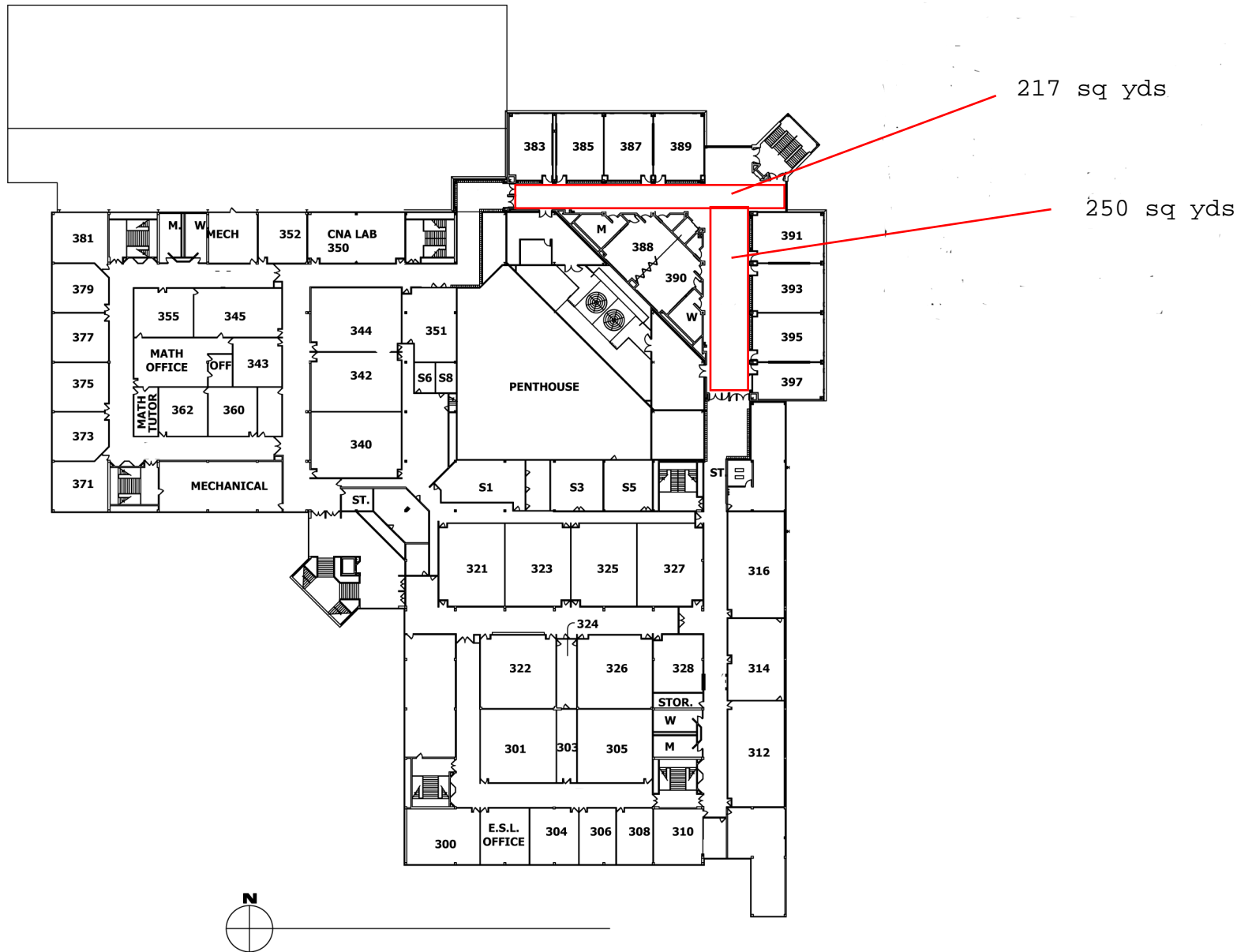
- H-A2246 - A2305
- I-A2401 - A2528
- J-A2306 - A2400
- K-A2001 - A2179
- L-A2180 - A2245
- M-C2001 - C2194
- N-C2195 - C2250
- O-C2251 - C2297
- P-C2298 - C2356
- Q-C2433 - C2508
- R-B2001 - B2082

250 sq yds (two rooms)



Palatine High School

3rd Floor
Approx. 470 sq. yds.
Bid # 1



250 sq yds

Palatine High School

1st Floor

Approx 1610 sq. yds

Bid # 2

200 sq yds

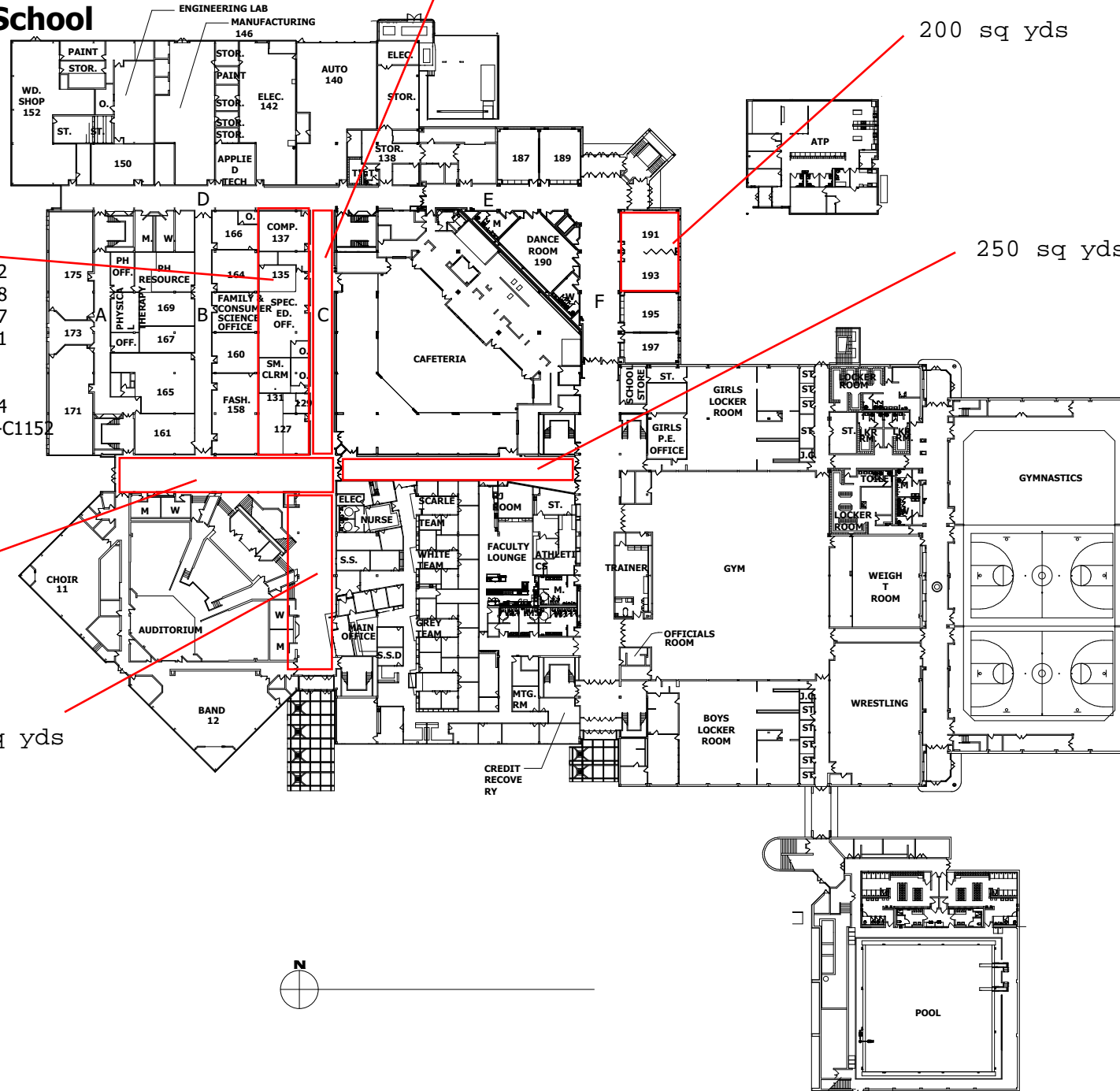
500 sq yds

- FIRST FLOOR PLAN
 LOCKER LOCATIONS
- A-A1409 - A1482
 - B-A1483 - A1578
 - C-A1001 - A1197
 - D-A1198 - A1401
 - E-C1131 - C1137
C1165 - C1176
 - F-B1001 - B1054
 - GUIDANCE HALL - C1049-C1152

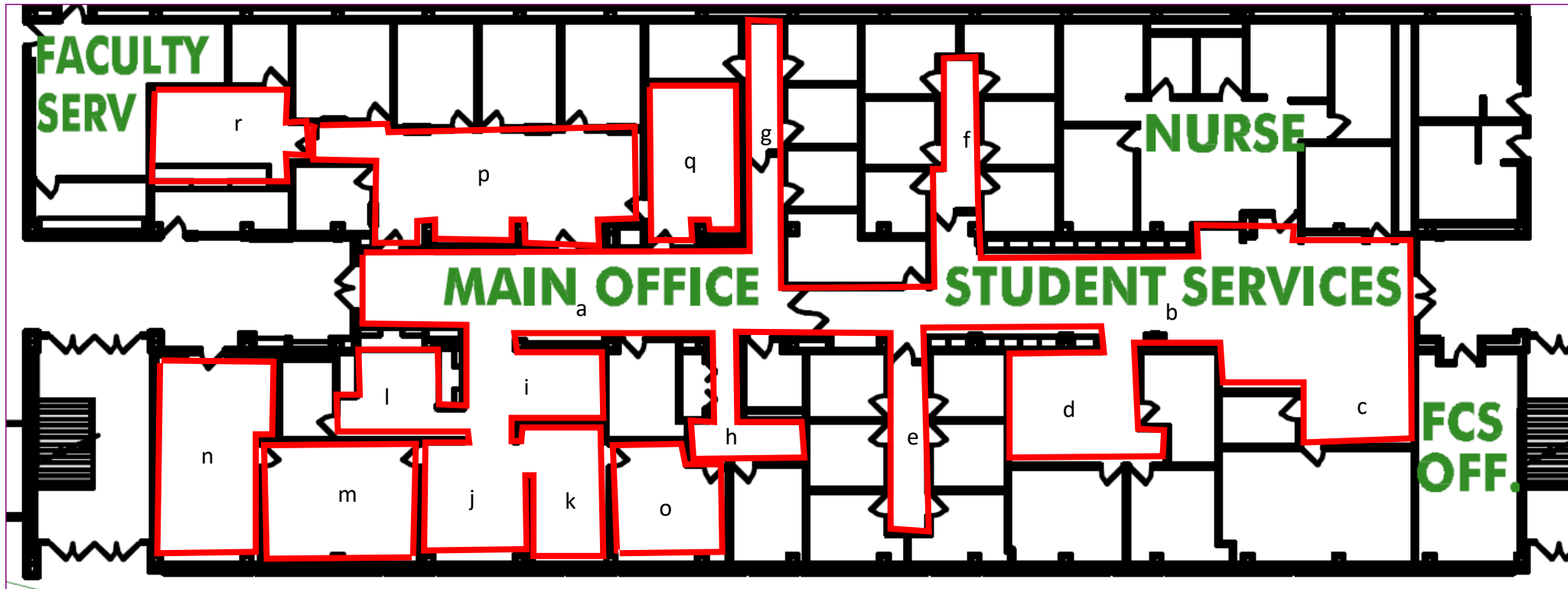
250 sq yds

205 sq yds

205 sq yds



Fremd HS Revised Carpet Main Office
 679 Sq. Yds. 2/14/20
 Bid # 1



Main office		sq ft	
A	56x12.5	700	
B	80x16	1280	
C	25.5x14	357	
D	15x17	255	
E	22x5	110	
F	22x6	132	
G	30x5	150	
H	10x4.5	45	
	13x5.5	71.5	
I	18.5x10	185	
J	16x14.5	232	
K	16x12	192	
L	17x12	204	
M	16x20	320	
N	27.5x13x5	364.5	
O	16x15	240	
P	35x15	525	
Q	21x12.5	315	
R	22x19.5	429	
		6107	679 sq yds office
			1100 Auditorium
			1779 total

Schaumburg High School Approx. 1550 Sq. Yds.

Bid # 1



William Fremd High School

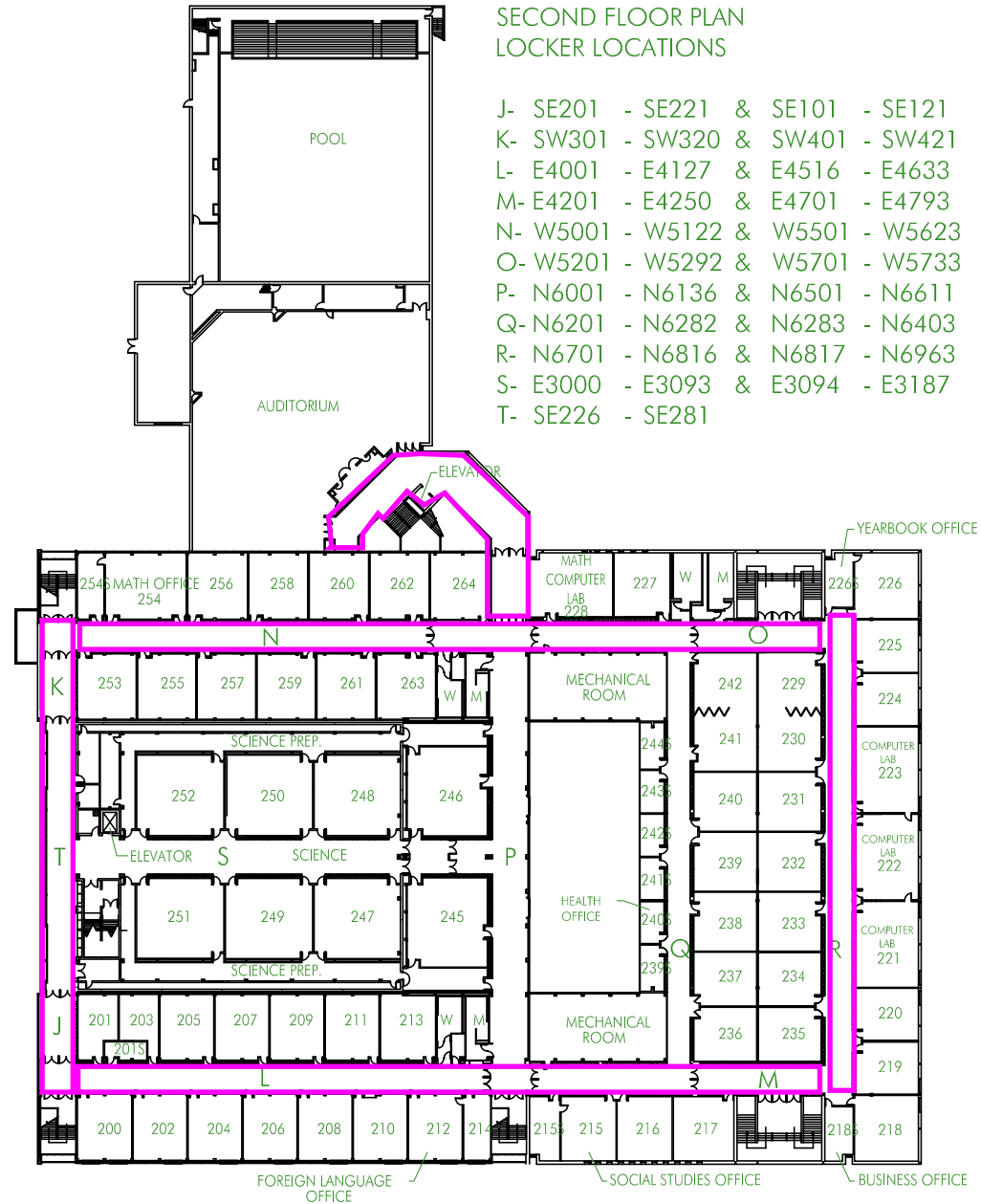
2nd Floor

Approx 1800 sq. yds

Bid #2.

SECOND FLOOR PLAN LOCKER LOCATIONS

- J- SE201 - SE221 & SE101 - SE121
- K- SW301 - SW320 & SW401 - SW421
- L- E4001 - E4127 & E4516 - E4633
- M- E4201 - E4250 & E4701 - E4793
- N- W5001 - W5122 & W5501 - W5623
- O- W5201 - W5292 & W5701 - W5733
- P- N6001 - N6136 & N6501 - N6611
- Q- N6201 - N6282 & N6283 - N6403
- R- N6701 - N6816 & N6817 - N6963
- S- E3000 - E3093 & E3094 - E3187
- T- SE226 - SE281



FIRST FLOOR PLAN

LOCKER LOCATIONS

GOLF HALLWAY

N1000-N1019

107 HALLWAY

S1000-S1019

116 HALLWAY

S1020-S1165

125 HALLWAY

N1020-N1151

129 HALLWAY

N1208-N1379

132 HALLWAY

N1152-N1207

141 HALLWAY

S1166-S1217

MEDIA CENTER HALLWAY

N1380-N1532

SELF-CONTAINED

N1587-N1744

151 HALLWAY

N1533-N1586

170 HALLWAY

S1218-S1268

N1745-N1760

S1269-S1341

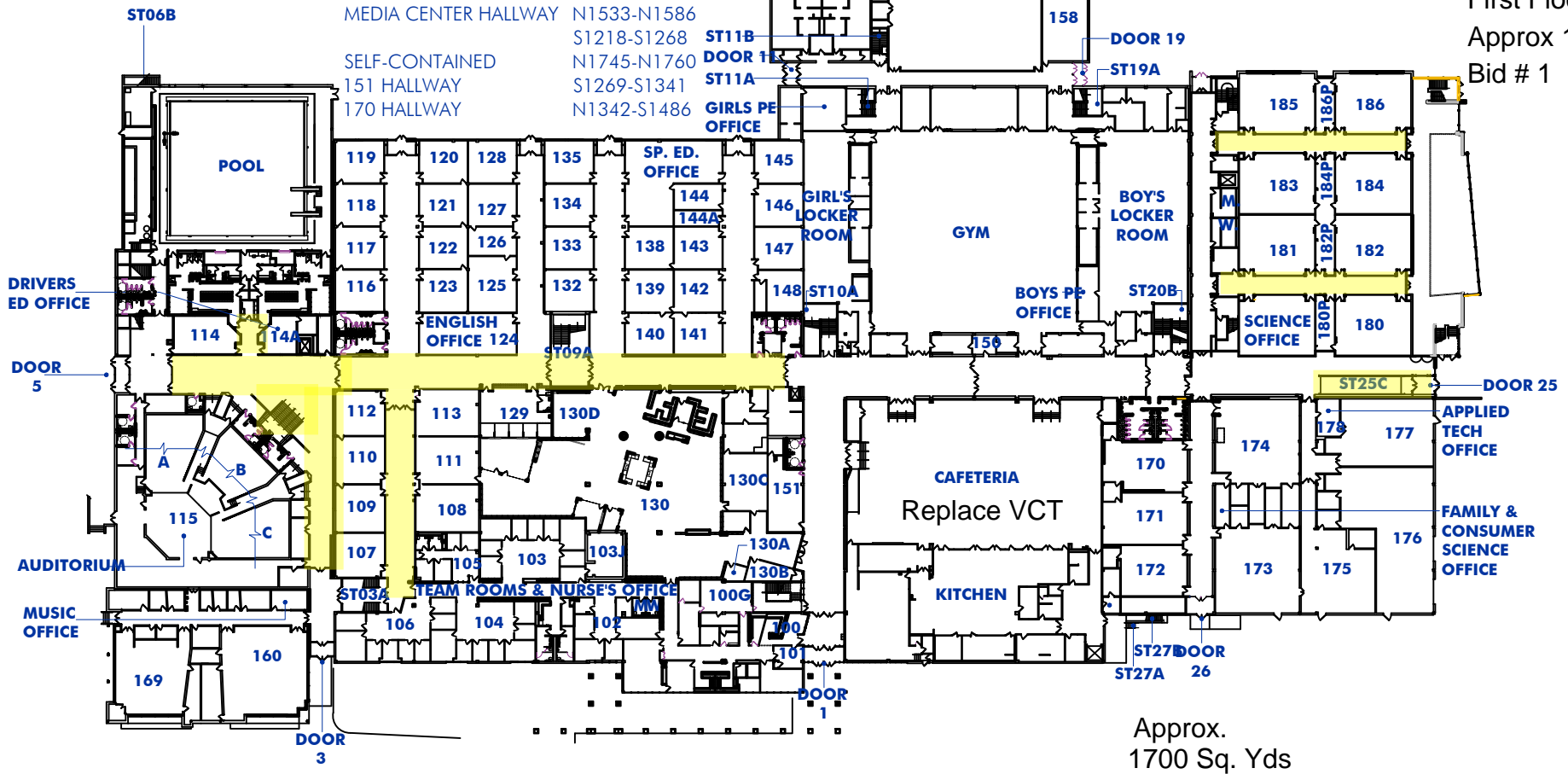
N1342-S1486

James B. Conant High School

First Floor

Approx 1700 sq. yds.

Bid # 1



Approx.
1700 Sq. Yds



FIRST FLOOR PLAN

not to scale

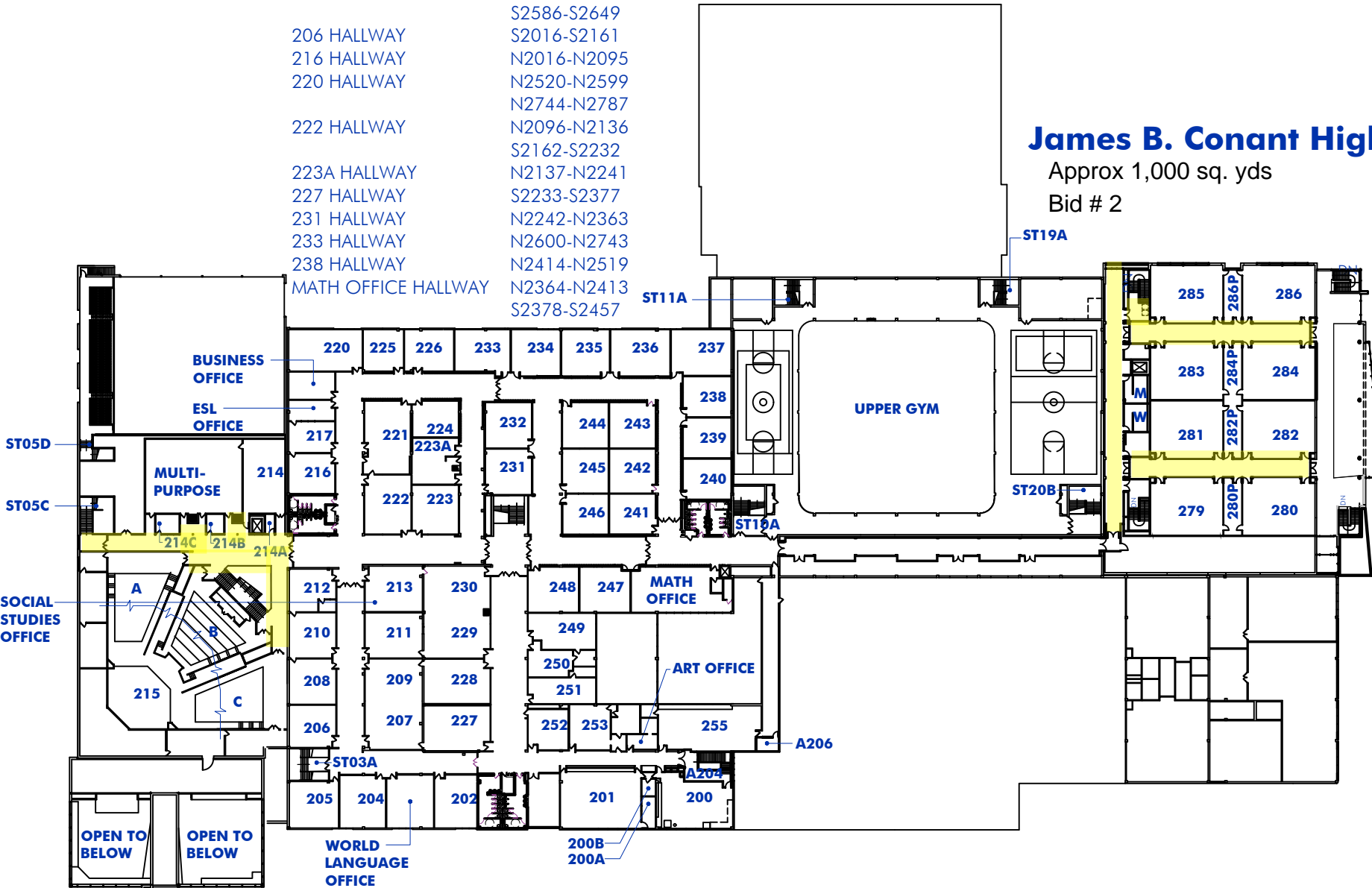
SECOND FLOOR PLAN LOCKER LOCATIONS

GOLF HALLWAY	N2000-N2015 S2000-S2015
200 HALLWAY	S2515-S2585
202 HALLWAY	S2548-S2514 S2586-S2649
206 HALLWAY	S2016-S2161
216 HALLWAY	N2016-N2095
220 HALLWAY	N2520-N2599 N2744-N2787
222 HALLWAY	N2096-N2136 S2162-S2232
223A HALLWAY	N2137-N2241
227 HALLWAY	S2233-S2377
231 HALLWAY	N2242-N2363
233 HALLWAY	N2600-N2743
238 HALLWAY	N2414-N2519
MATH OFFICE HALLWAY	N2364-N2413 S2378-S2457

James B. Conant High School

Approx 1,000 sq. yds

Bid # 2



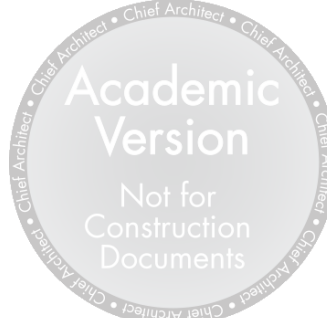
SECOND FLOOR PLAN

not to scale

Approx. 1000 Sq. Yds.

Schaumburg High School

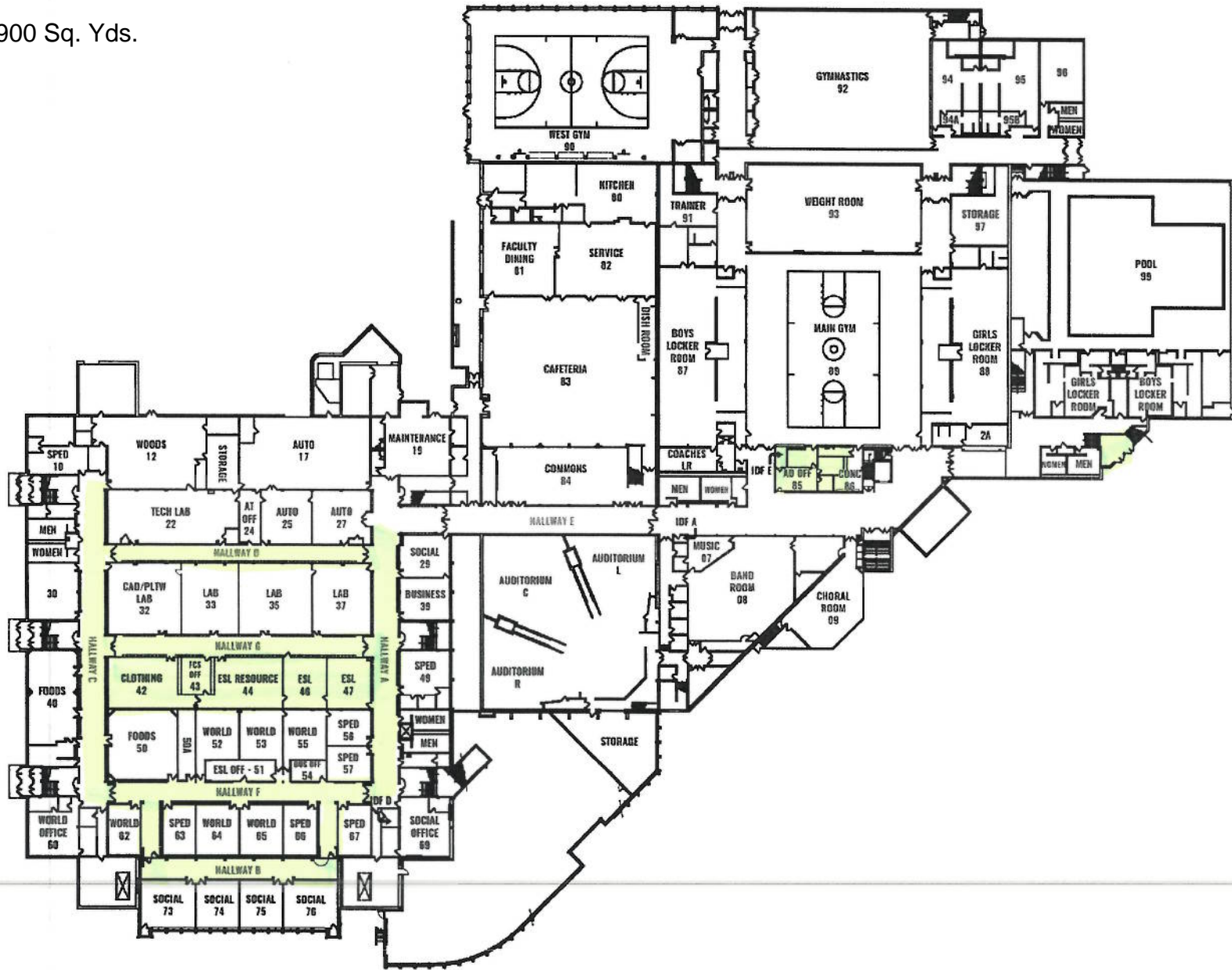
Approx. 2,000 Sq. Yds. Bid #2



Hoffman Estates High School

Approx 1900 Sq. Yds.

Bid # 1



GROUND FLOOR PLAN
NOT TO SCALE

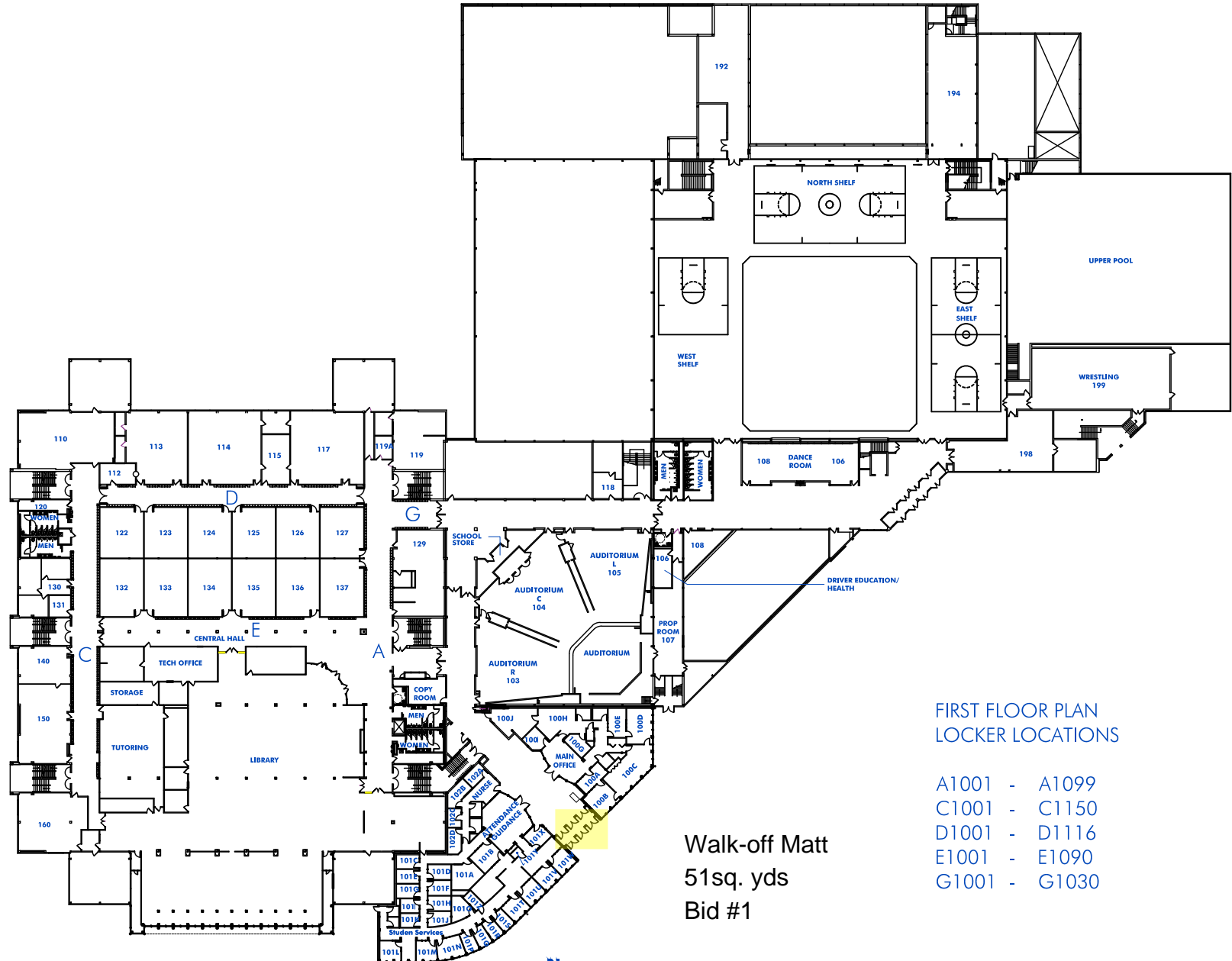
Hoffman Estates High School

Approx 1900 Sq. Yds
Bid # 2



SECOND FLOOR PLAN
NOT TO SCALE

Hoffman Estates High School



FIRST FLOOR PLAN
LOCKER LOCATIONS

- A1001 - A1099
- C1001 - C1150
- D1001 - D1116
- E1001 - E1090
- G1001 - G1030

Walk-off Matt
51sq. yds
Bid #1

INSTRUCTIONS TO BIDDERS

1. GENERAL

- A. Bid shall be submitted in an envelope properly marked with the title of the bid, date, and time of opening.
- B. Seal and deliver to the Business Office on or before the time scheduled for the opening.
- C. All bids shall be made on this form.
- D. Unsigned or late bids will not be considered.
- E. Township High School District 211 is not subject to Federal Excise Tax or Illinois Retailers Occupational Tax.
- F. Prices quoted shall include all charges for packing, transportation, and delivery to the School Building or District Office as designated on the bid.
- G. Correspondence shall be addressed to the Director of Facilities & Purchasing.
- H. Bids are available for inspection in the Business Office by appointment after the award of orders.
- I. Oral, telephonic, telegraphic, or facsimile transmitted bids will not be accepted. The use of District transmission equipment by Bidders is prohibited.

2. ERRORS AND OMISSIONS

All proposals shall be submitted with each space properly completed. The special attention of Bidders is directed to the policy that no claim for relief because of errors or omissions in the bidding will be considered, and Bidders will be held strictly to the proposals as submitted. Should a Bidder find any discrepancies in, or omission from, any of the documents, or be in doubt as to its meanings, they shall advise the Director of Facilities & Purchasing who will issue the necessary clarifications to all prospective Bidders by means of addenda.

3. FIRM BID

All bids will be considered to be firm for a period of ninety (90) days from the date established for the opening of bids.

4. WITHDRAWAL OF BIDS

Bids may be withdrawn by letter, FAX, or in person prior to the time and date established for the opening of bids.

5. INVESTIGATION OF BIDDERS

- A. The Business Office will make such investigation as is necessary to determine the ability of the Bidder to fulfill bid requirements. If requested, the bidder shall be prepared to show completed installations of equipment, types of service, or supplies similar to those included in this bid.
- B. The Board of Education reserves the right to reject any bid if it is determined that the Bidder is not

properly qualified to carry out the obligations of the Contract.

6. RESERVATION OF RIGHTS BY THE DISTRICT

The Board of Education reserves the right to reject any and all bids, to waive irregularities, and to accept the lowest responsible Bidder, considering conformity with specifications, terms of delivery, quality, and serviceability. All items shall be new unless otherwise specified. By submitting a bid, Bidders agree to mandatory binding arbitration on all bid disputes.

7. COMPLIANCE WITH LEGISLATION

A. It shall be mandatory upon the Contractor(s) to whom a contract for public works is awarded and upon any subcontractor thereof to pay all laborers, workmen, and mechanics employed by them not less than the general prevailing rate of wages in the locality for each craft or type of workmen or mechanic needed to perform such work and the general prevailing rate for legal holiday and overtime work as ascertained by the Department of Labor (copy attached). Bidders are required to increase wages as necessary during the term of this contract so as to keep current with prevailing wage rates. No changes will be allowed in the amount of this contract as additional compensation for such changes.

While participating on public works projects, the contractor and each sub-contractor must submit (monthly) a certified payroll to the District in accordance with the Prevailing Wage Act.

B. It shall be mandatory that the Contractor will not discriminate against any employee or applicant for employment upon any grounds prohibited by the Human Rights Act (775ILCS 5/1-101) and further that the Contractor will comply with all provisions of the Human Rights Act including, but not limited to, rules and regulations of the Illinois Human Rights Commission.

8. SIGNATURE CONSTITUTES ACCEPTANCE

The signing of these bid forms shall be construed as acceptance of all provisions contained herein.

9. CONTRACTS

The successful Bidder will be required to enter into a contract incorporating the terms and conditions of this bid.

10. COMPLIANCE WITH LEGISLATION

During the performance of this Contract (whether or not Federal funds are involved) the Contractor agrees as follows:

A. The Contractor will not discriminate against any employee or applicant for employment because of age, race, creed, color, sex, national origin, or disability. The Contractor will take affirmative action to ensure that applicants are employed, and that employees are treated equally during employment, without regard to their age, race, creed, color, sex, national origin, or disability. Such action shall

include, but not be limited to, the following: employment, upgrading, demotion or transfer; recruitment or recruitment advertising; layoff or termination; rates of pay or other forms of compensation; and selection for training, including apprenticeship. The Contractor agrees to post in conspicuous places, available to employees and applicants for employment, notices to be provided setting forth the provisions of this nondiscrimination clause.

B. The Contractor will, in all solicitations or advertisements for employees placed by or on behalf of the Contractor, state that all qualified applicants will receive consideration for employment without regard to age, race, creed, color, sex, or national origin.

C. The Contractor will furnish all information and reports required by Executive Order No. 11246 of September 24, 1965, and by the rules, regulations, and orders of the Secretary of Labor, or pursuant thereto and will permit access to his books, records, and accounts by the contracting agency and the Secretary of Labor for purposes of investigation, to ascertain compliance with such rules, regulations, and orders.

D. In the event of the Contractor's noncompliance with the nondiscrimination clauses of this Contract or with any of such rules, regulations, or orders, this Contract may be cancelled, terminated, or suspended in whole or in part, and the Contractor may be declared ineligible for further Government contracts or Federally assisted construction contracts, in accordance with the procedures authorized in Executive Order of September 24, 1965, and such other sanctions may be imposed and remedies invoked as provided in Executive Order No. 11246 of September 24, 1965, or by rule, regulation, or order of the Secretary of Labor, or as otherwise provided by Law.

E. The Contractor shall include the provisions of paragraphs A through D in every subcontract or purchase order unless exempted by rules, regulations, or orders of the Secretary of Labor issued pursuant to Sec. 204 of Executive Order No. 11246 of September 24, 1965, so that such provisions will be binding upon each subcontractor or vendor. The Contractor shall take such action with respect to any subcontractor or purchase order as the contracting agency may direct as a means of enforcing such provisions, including sanctions for noncompliance, provided, however, that in the event the Contractor becomes involved in, or is threatened with, litigation with a subcontractor or vendor as a result of such direction by the contracting agency, the Contractor may request the United States to enter into such litigation to protect the interest of the United States.

F. The bidder is directed that all applicable state laws, municipal ordinances, district policies, and the rules and regulations of all authorities having jurisdiction over any aspect of the herein described project shall apply to the contract throughout, and will be deemed to be included in the contract the same as though herein written in full; provided that municipal ordinances, policies, practices and other municipal regulations that create a conflict with the bidding requirements of the Illinois School Code are not applicable.

11. COMPLETION DELIVERY TIME

If delivery time will exceed thirty (30) days after receipt of a purchase order, state the delivery time by the respective items in the "Description" column. All prices must be quoted F.O.B. DESTINATION. Shipments shall become property of consignee after delivery and acceptance. Regardless of statements to the contrary, payment terms will begin no sooner than the date of delivery of goods.

12. EVALUATIONS

The Board of Education reserves the right to reject any and all bids, to waive any technicalities in the bidding, and to award each item to different Bidders or all items to a single Bidder unless otherwise noted on bid request, and to determine whether in the opinion of the Board of Education: (1) an equal or alternate is a satisfactory substitute, (2) a Bidder is not a responsible Bidder and should be disregarded, and, (3) what exceptions or deviations from written specifications will be accepted. The Board of Education will authorize the release of purchase orders upon acceptance of bids. In the event of pricing errors, the unit cost(s) listed will prevail and be considered accurate.

13. EXAMINATION OF DOCUMENTS AND SITE

Before submitting a proposal for work on any project, each Bidder shall carefully examine the project site and the Contract documents, fully inform itself of existing conditions and limitations of the project sites, rely entirely upon its own judgment in making its proposal, and include in its proposal all sums sufficient for it to provide all work required by the Contract documents. After opening of bids, no additional allowance will be made for changes in project scope and/or price due to work which would have been apparent by examination of the documents and sites. By submitting its proposal, each Bidder shall be held to represent that it has made the examination in complete detail and has determined beyond doubt that the documents and existing conditions are sufficient, adequate, and satisfactory for its completion of the work. A Bidder may visit the project sites during the hours of 8:00 A.M. to 4:00 P.M. on weekdays, Monday through Friday. The site location(s) is (are) at building(s) A, P, F, C, S, H (see Delivery Points section for addresses).

14. PERFORMANCE/LABOR AND MATERIAL PAYMENT BONDS (construction projects ONLY)

Within ten (10) days of the date of the Notice of Award, the successful Contractor shall enter into a formal Contract with the Board of Education and shall provide a Performance Bond and a Labor and Material Payment Bond, each in the full amount of the Contract. The Bonds shall be in accordance with A.I.A. Documents A311. The Contractor shall pay the cost of premiums for said bonds. The Bonds shall be signed and sealed by an authorized representative of the Bonding Company and authorized officer or representative of the Contractor, and a certificate of the authority of those signing the Bonds, if not officers, shall be attached thereto.

The Performance Bond and the Labor and Material Payment Bond shall guarantee the performance of the duties placed on the Contractor by the prevailing Wage Act, as well as all other duties undertaken by it pursuant to the Contract with the Board of Education, and shall indemnify the Board of Education from any liability or loss resulting to the Board of Education from any failure of the Contractor fully to perform each or all of said duties.

The Performance Bond and the Labor and Material Bond herein provided shall be placed with a Surety Company or companies having a policyholders' rating not lower than "A" and a financial rating not lower than "AAA" in Best's Insurance Guide (current edition). Company must be licensed in the State of Illinois and shall show evidence of same.

15. BID SECURITY (construction projects ONLY)

A Bid Bond or Certified Check made payable to Township High School District 211, Cook County, Illinois, in the amount of 10 percent (10%) of the proposal shall accompany each bid as a guarantee that the Bidder, if awarded the Contract, will furnish the required Performance and Labor and Material Payment Bonds, execute the Contract, and proceed with the work. Upon failure to do so, the Contractor shall forfeit the Check or amount of Bid Bonds as liquidated damages. No mistakes or errors on the part of the Bidder shall excuse the Bidder or entitle it to a return of the Check or Bid Bond. No Bidder may withdraw its bid for a period of 60 days after the date of opening thereof.

The Bid Bonds or Checks will, with the exception of those of the three lowest bidders, be returned seven (7) days after the opening of bids, and the remaining Checks or Bid Bonds will be returned when the Contract is executed and Bond provided.

16. DELIVERY POINTS

Deliveries shall be made to the following addresses when “specific” locations are indicated in the bid specifications. The delivery points may be indicated by the school names or by the alphabetic code listed next to each of the addresses listed below:

A Township High School District 211
Administration Center
1750 South Roselle Road
Palatine, Illinois 60067-7336
847-755-6600

C James B. Conant High School
700 E. Cougar Trail
Hoffman Estates, Illinois 60169-3659
847-755-3600

P Palatine High School
1111 N. Rohlwing Road
Palatine, Illinois 60074-3777
847-755-1600

S Schaumburg High School
1100 W. Schaumburg Road
Schaumburg, Illinois 60194-4150
847-755-4600

F William Fremd High School
1000 S. Quentin Road
Palatine, Illinois 60067-7018
847-755-2600

H Hoffman Estates High School
1100 W. Higgins Road
Hoffman Estates, Illinois 60169-4050
847-755-5600

17. INSURANCE (construction and service contracts ONLY)

The Contractor shall provide and maintain insurance in the amounts outlined below with companies acceptable to the School District:

A. Worker's Compensation Insurance:

Coverage A — Illinois Statutory Limits

Coverage B — Employer's Liability \$500,000 Limit

B. Automobile Liability Insurance: \$1,000,000 combined single limit per occurrence for bodily injury and property damage and include coverage for all owned, non-owned, and hired automobiles.

C. Commercial General Liability Insurance shall provide the following limits:

\$1,000,000 each occurrence

\$2,000,000 General Aggregate

\$2,000,000 Completed Operations Aggregate

\$1,000,000 Personal Injury

This policy shall include the following coverages:

A. Premises/Operations

B. Independent Contractors

C. Products/Completed Operations

D. Contractual Liability – Blanket

E. Broad Form Property Damage

F. Personal Injury – Offenses A, B, C,
– exclusion C deleted

Contractual Liability Coverage, including the “Indemnification of School District and Architect” (hold harmless agreement), must be fully insured under this policy for the liability limits set forth above. In addition, Care, Custody and Control, and XCU exclusions shall be removed from all policies under this Contract and suitable coverage provided subject to the approval of the School District's insurance counselor.

The Contractor is responsible for all claims arising out of sales of vended product on the premises and injury and/or death caused by the vendor's delivery vehicles on and immediately adjacent to the premises.

D. Umbrella Liability Insurance: It is required that an umbrella policy be written for a minimum of \$2,000,000 for bodily injury and property damage. This umbrella policy would be in excess of the limits of the primary policy outlined above.

All such insurance shall not be cancellable without thirty (30) days prior written notice being given to the School District. All insurance shall indicate that it is primary and any material change shall cause notice to District 211 thirty (30) days prior to the change.

With respect to the insurance required herein, the Contractor shall provide such insurance naming the School District, the Board of Education and its members individually, and its employees and agents as “additional named insured.” The Contractor shall also purchase and maintain such insurance as will protect the School District from and against all claims, damages, loss, and expenses, including attorney's fees arising out of

or resulting from the performance of the work, provided that any such claim, damage, loss, or expense (1) is attributable to bodily injury to or destruction of tangible property (other than the work itself), including the loss of use resulting therefrom, and (2) is caused in whole or in part by a negligent act or omission of the Contractor, subcontractor, anyone directly or indirectly employed by any of them, or anyone for whose acts they may be liable, regardless of whether or not it is caused in part by a party to whom insurance is afforded pursuant to this paragraph.

It is MANDATORY within ten (10) days after the bid award that Certificate(s) of Insurance shall be submitted to the School District 211 Director of Facilities & Purchasing and the School District's insurance consultant: Mr. Michael D. Nugent, Nugent Consulting Group, 2409 Peachtree Lane, Northbrook, IL 60062.

18. TOTAL PRICE FOR ALL ITEMS BID

A total bid dollar amount, regardless of whether or not you are bidding all items, *MUST* be entered in the appropriate section of the Bid Form before signing and submitting your bid.

19. HOLD HARMLESS AND INDEMNIFICATION

The Contractor shall assume all liability for, and shall protect, defend, indemnify, and hold harmless the Board of Education and its members individually, their officers, employees, servants, and agents from and against all claims, actions, suits, judgments, costs, losses, expenses, and liabilities of whatsoever kind or nature including reasonable legal fees incurred by owner arising out of:

A. Any infringement (actual or claimed) of any patents, copyrights, or trade names by reason of any work performed or to be performed by the Contractor under this Contract or by reason of anything to be supplied by the Contractor pursuant to this Contract.

B. Bodily injury, including death, to any person or persons (including Contractor's officers, employees, agents, and servants) or damage to or destruction of any property, including the loss of use thereof:

— Caused in whole or in part by any act, error, or omissions by the Contractor or any subcontractor or anyone directly or indirectly employed by any of them regardless of whether or not it is caused in part by a party to be indemnified hereunder.

— Arising directly or indirectly out of the presence of any person in or about any part of the project size or the streets, sidewalks, and property adjacent thereto.

— Arising directly or indirectly out of the use, misuse, or failure of any machinery or equipment used directly or indirectly in the performance of this Contract.

20. LATE BIDS

Bids received after the time specified on the Invitation to Bid will not be considered. The method of transmittal of the bid proposal is at the Bidder's risk of untimely receipt by the School District. The use of

District equipment for transmission of bids is prohibited.

21. RECYCLED PRODUCTS

District 211 supports national and local efforts for recycling. Bidders are encouraged to offer recycled supplies and materials as bid alternatives. Notations are to be included as to percentage of recycled products in each item.

22. CERTIFICATIONS

A. Drug-Free Workplace

Applicable only to companies with 25 or more employees. The Vendor shall hereby certify, pursuant to section 3 of the Illinois Drug-Free Workplace Act (30 ILCS 580/3), that the Bidder shall provide a drug-free workplace for all employees engaged in the performance of work under the contract by complying with the requirements of the Illinois Drug-Free Workplace Act and, further certifies, that the Bidder is not ineligible for award of this contract by reason of debarment for a violation of the Illinois Drug-Free Workplace Act.

B. Bid-Rigging

The Bidder hereby certifies that the Bidder is not barred from bidding on this contract as a result of a violation of either the bid-rigging or bid-rotating provisions of Article 33E of the Criminal Code of 1961, as amended.

C. Prevailing Wages

It shall be mandatory upon the Contractor(s) to whom a contract for public works is awarded and upon any subcontractor thereof to pay all laborers, workmen, and mechanics employed by them not less than the general prevailing rate of wages in the locality for each craft or type of workmen or mechanic needed to perform such work, and the general prevailing rate for legal holiday and overtime work as ascertained by the Department of Labor (copy attached). Bidders are required to increase wages as necessary during the term of this contract so as to keep current with prevailing wage rates. Current wage rates are available from the Department of Labor (www.dol.gov). Weekly certified payrolls are required from prime and subcontractors. They may be submitted with each pay request. No changes will be allowed in the amount of this contract as additional compensation for such changes.

D. Background Checks

All contractors or individual vendor representative(s) who have contact with students or perform work in student areas when students are likely to be present need to have a sex offender background check performed before they may work in any District 211 building. By submitting a bid, the vendor agrees that its employees may be checked by the District prior to working on District property.

E. Sexual Harassment Clause

Each Bidder must certify that it has complied with the requirements of Section 2-105 of the Illinois Human Rights Act (Public Act 87-1257), effective July 1, 1993, with respect to sexual harassment policies. The terms of that law, as applicable, are hereby incorporated into this contract.

F. Non-Discrimination Clause

The Contractor will not discriminate against any employee or applicant for employment because of age, race, creed, color, sex, national origin, or disability. Such action shall include, but not be limited to the following: employment, upgrading, demotion or transfer; recruitment or recruitment advertising; layoff or termination; rates of pay or other forms of compensation; and selection for training, including apprenticeship. The Contractor agrees to post, in conspicuous places available to employees and applicants for employment, notices to be provided setting forth the provisions of the non-discrimination clause.

The Contractor will, in all solicitations or advertisements for employees placed by or on behalf of the Contractor, state that all qualified applicants will receive consideration for employment without regard to age, race, creed, color, sex, or national origin.

The Contractor will furnish all information and reports required by Executive Order No. 11246 of September 24, 1965, and by the rules, regulations, and orders of the Secretary of Labor, or pursuant thereto, and will permit access to his books, records, and accounts by the contracting agency and the Secretary of Labor for purposes of investigation, to ascertain compliance with such rules, regulations, and orders.

In the event of the Contractor's non-compliance with the non-discrimination clauses of this Contract or with any of such rules, regulations, or orders, this Contract may be cancelled, terminated, or suspended in whole or in part, and the Contractor may be declared ineligible for further Government contracts or federally-assisted construction contracts, in accordance with the procedures authorized in Executive Order of September 24, 1965, and such other sanctions may be imposed and remedies revoked as provided in Executive Order No. 11246 of September 24, 1965, or by rule, regulation, or order of the Secretary of Labor, or as otherwise provided by law.

The Contractor shall include the provisions of Paragraph A through D in every subcontract or purchase order unless exempted by the rules, regulations, or orders of the Secretary of Labor issued pursuant to Section 204 of Executive Order No. 11246 of September 24, 1965, so that such provisions will be binding upon each subcontractor or vendor. The Contractor shall take such action with respect to any subcontractor or purchase order as the contracting agency may direct as a means of enforcing such provisions, including sanctions for non-compliance, provided, however, that in the event the Contractor becomes involved in, or is threatened with, litigation with a sub-contractor or vendor as a result of such direction by the contracting agency, the Contractor may request the United States to enter into such litigation to protect the best interest of the United States.

The Bidder is directed that all applicable state laws, municipal ordinances, district policies, and the rules and regulations of all authorities having jurisdiction over any aspect of the herein described project shall apply to the Contract throughout, and will be deemed to be included in the Contract the same as though herein written in full; provided that municipal ordinances, policies, practices, and other municipal regulations that create a conflict with the bidding requirements of the Illinois School Code are not applicable.

G. Non-Collusion Affidavit

The undersigned Bidder or Agent, being duly sworn, on oath, says that he has not, or has any other member, representative, or agent of the firm, company, corporation, or partnership represented by him, entered into any combination, collusion, or agreement with any person relative to the bid price to be bid by anyone at such letting, nor to prevent any person from bidding nor to induce anyone to refrain from bidding, and that this bid is made without reference to any other bid and without agreement, understanding, or combination with any

other person in reference to such bidding.

He further says that no persons, firms, or corporation has, have, or will receive directly, any rebate, fee, gift, commission, or thing of value on account of such sale.

H. MBE/WBE/DBE Status

Please check one. This firm is a:

- Minority Business Enterprise (MBE) – a firm that is at least 51% owned, managed, and controlled by a minority.
- Women’s’ Business Enterprise (WBE) – a firm that is at least 51% owned, managed, and controlled by a woman.
- Disadvantaged Enterprise (DBE) – a firm that is at least 51% owned, managed, and controlled by a person with a disability.
- This firm is not a MBE, WBE, or DBE.

Please attach copies of MBE, WBE, and DBE certifications.

NOTE: The Board of Education states that it is in compliance with all applicable laws.

I have examined the specifications and instructions included herein and agree, provided I am awarded a contract within 90 days of the bid due date, to provide the specified items and/or services or work as described in the specifications and the instructions for the sum shown in accordance with the terms stated herein. All deviations from specifications and terms are in writing and attached hereto.

Courtesy “No Bid” Response Questionnaire

For Bid # 2015

If you are not submitting a price on this bid, District 211 would like your input as to why you are not bidding. Please indicate your reason and return by March 3, 2020 to:

John V. Pahlman, Director of Facilities & Purchasing
Township High School District 211
1750 South Roselle Road, Palatine, IL 60067

- Previous commitments, too busy –
Please keep us on the bid list _____
Please take us off the bid list _____

- Job is too small
- Job is too large
- Our firm is not suited for this type of work –
Please keep us on the bid list _____
Please take us off the bid list _____

- We do not like to bid jobs, **please take us off the bid list.**

- We could not schedule a site examination
- We could not get bonding for this job
- Other _____

Company Name _____

Address _____

City, State and Zip Code _____

Telephone Number _____

Email Address _____

Contact Name and Title _____

Date _____

Check List for Bidders

1. Have you carefully reviewed the specifications, including “Instructions to Bidders”?
2. Have you signed the “Invitation to Bid and Bid Form”?
3. Have you indicated your total price for items bid on the “Invitation to Bid and Bid Form”?
4. Have you furnished business references (if required)?
5. Is your bid in a sealed envelope, clearly marked **on the outside of the envelope** with the bid number or name, as required?
6. Have you made arrangements to submit samples, if required?

Cook County Prevailing Wage Rates posted on 1/28/2020

Trade Title	Rg	Type	C	Base	Foreman	Overtime				H/W	Pension	Vac	Trng	Other Ins
						M-F	Sa	Su	Hol					
ASBESTOS ABT-GEN	All	ALL		43.72	44.72	1.5	1.5	2.0	2.0	14.99	13.61	0.00	0.90	
ASBESTOS ABT-MEC	All	BLD		37.88	40.38	1.5	1.5	2.0	2.0	13.42	12.20	0.00	0.72	
BOILERMAKER	All	BLD		50.51	55.05	2.0	2.0	2.0	2.0	6.97	14.65	0.00	1.10	
BRICK MASON	All	BLD		46.88	51.57	1.5	1.5	2.0	2.0	10.85	19.31	0.00	0.95	
CARPENTER	All	ALL		48.55	50.55	1.5	1.5	2.0	2.0	11.79	21.84	0.00	0.73	
CEMENT MASON	All	ALL		46.25	48.25	2.0	1.5	2.0	2.0	14.50	19.04	0.00	1.25	
CERAMIC TILE FINISHER	All	BLD		40.56	40.56	1.5	1.5	2.0	2.0	11.00	12.80	0.00	0.86	
COMMUNICATION ELECTRICIAN	All	BLD		44.86	47.66	1.5	1.5	2.0	2.0	10.22	13.48	1.25	1.15	0.07
ELECTRIC PWR EQMT OP	All	ALL		53.40	58.40	1.5	1.5	2.0	2.0	12.36	17.72	0.00	3.39	
ELECTRIC PWR GRNDMAN	All	ALL		41.65	58.40	1.5	1.5	2.0	2.0	9.64	13.82	0.00	2.65	
ELECTRIC PWR LINEMAN	All	ALL		53.40	58.40	1.5	1.5	2.0	2.0	12.36	17.72	0.00	3.39	
ELECTRICIAN	All	ALL		49.35	52.35	1.5	1.5	2.0	2.0	15.69	17.02	1.25	1.48	0.40
ELEVATOR CONSTRUCTOR	All	BLD		56.61	63.69	2.0	2.0	2.0	2.0	15.58	17.51	4.53	0.62	
FENCE ERECTOR	All	ALL		42.88	44.88	1.5	1.5	2.0	2.0	13.64	14.89	0.00	0.65	
GLAZIER	All	BLD		44.85	46.35	1.5	2.0	2.0	2.0	14.49	22.29	0.00	0.94	
HEAT/FROST INSULATOR	All	BLD		50.50	53.00	1.5	1.5	2.0	2.0	13.42	13.66	0.00	0.72	
IRON WORKER	All	ALL		50.63	52.63	2.0	2.0	2.0	2.0	14.65	23.78	0.00	0.44	
LABORER	All	ALL		43.72	44.47	1.5	1.5	2.0	2.0	14.99	13.61	0.00	0.90	
LATHER	All	ALL		48.55	50.55	1.5	1.5	2.0	2.0	11.79	21.84	0.00	0.73	
MACHINIST	All	BLD		48.93	51.43	1.5	1.5	2.0	2.0	7.68	8.95	1.85	1.32	
MARBLE FINISHER	All	ALL		35.15	48.33	1.5	1.5	2.0	2.0	10.85	17.66	0.00	0.52	
MARBLE MASON	All	BLD		46.03	50.63	1.5	1.5	2.0	2.0	10.85	18.78	0.00	0.64	
MATERIAL TESTER I	All	ALL		33.72		1.5	1.5	2.0	2.0	14.99	13.61	0.00	0.90	
MATERIALS TESTER II	All	ALL		38.72		1.5	1.5	2.0	2.0	14.99	13.61	0.00	0.90	
MILLWRIGHT	All	ALL		48.55	50.55	1.5	1.5	2.0	2.0	11.79	21.84	0.00	0.73	
OPERATING ENGINEER	All	BLD	1	51.10	55.10	2.0	2.0	2.0	2.0	20.50	16.85	2.00	1.65	
OPERATING ENGINEER	All	BLD	2	49.80	55.10	2.0	2.0	2.0	2.0	20.50	16.85	2.00	1.65	
OPERATING ENGINEER	All	BLD	3	47.25	55.10	2.0	2.0	2.0	2.0	20.50	16.85	2.00	1.65	
OPERATING ENGINEER	All	BLD	4	45.50	55.10	2.0	2.0	2.0	2.0	20.50	16.85	2.00	1.65	
OPERATING ENGINEER	All	BLD	5	54.85	55.10	2.0	2.0	2.0	2.0	20.50	16.85	2.00	1.65	
OPERATING ENGINEER	All	BLD	6	52.10	55.10	2.0	2.0	2.0	2.0	20.50	16.85	2.00	1.65	

OPERATING ENGINEER	All	BLD	7	54.10	55.10	2.0	2.0	2.0	2.0	20.50	16.85	2.00	1.65
OPERATING ENGINEER	All	FLT	1	58.20	58.20	1.5	1.5	2.0	2.0	19.65	15.10	2.00	1.40
OPERATING ENGINEER	All	FLT	2	56.70	58.20	1.5	1.5	2.0	2.0	19.65	15.10	2.00	1.40
OPERATING ENGINEER	All	FLT	3	50.45	58.20	1.5	1.5	2.0	2.0	19.65	15.10	2.00	1.40
OPERATING ENGINEER	All	FLT	4	41.95	58.20	1.5	1.5	2.0	2.0	19.65	15.10	2.00	1.40
OPERATING ENGINEER	All	FLT	5	59.70	58.20	1.5	1.5	2.0	2.0	19.65	15.10	2.00	1.40
OPERATING ENGINEER	All	FLT	6	38.00	58.20	1.5	1.5	2.0	2.0	19.65	15.10	2.00	1.40
OPERATING ENGINEER	All	HWY	1	49.30	53.30	1.5	1.5	2.0	2.0	20.50	16.85	2.00	1.65
OPERATING ENGINEER	All	HWY	2	48.75	53.30	1.5	1.5	2.0	2.0	20.50	16.85	2.00	1.65
OPERATING ENGINEER	All	HWY	3	46.70	53.30	1.5	1.5	2.0	2.0	20.50	16.85	2.00	1.65
OPERATING ENGINEER	All	HWY	4	45.30	53.30	1.5	1.5	2.0	2.0	20.50	16.85	2.00	1.65
OPERATING ENGINEER	All	HWY	5	44.10	53.30	1.5	1.5	2.0	2.0	20.50	16.85	2.00	1.65
OPERATING ENGINEER	All	HWY	6	52.30	53.30	1.5	1.5	2.0	2.0	20.50	16.85	2.00	1.65
OPERATING ENGINEER	All	HWY	7	50.30	53.30	1.5	1.5	2.0	2.0	20.50	16.85	2.00	1.65
ORNAMENTAL IRON WORKER	All	ALL		50.05	52.55	2.0	2.0	2.0	2.0	14.14	21.13	0.00	1.25
PAINTER	All	ALL		47.30	53.21	1.5	1.5	1.5	2.0	12.01	12.74	0.00	1.87
PAINTER - SIGNS	All	BLD		39.84	44.74	1.5	1.5	2.0	2.0	2.73	3.39	0.00	0.00
PILEDRIVER	All	ALL		48.55	50.55	1.5	1.5	2.0	2.0	11.79	21.84	0.00	0.73
PIPEFITTER	All	BLD		49.60	52.60	1.5	1.5	2.0	2.0	10.75	19.85	0.00	2.67
PLASTERER	All	BLD		44.50	47.17	1.5	1.5	2.0	2.0	14.50	17.29	0.00	1.50
PLUMBER	All	BLD		51.00	54.05	1.5	1.5	2.0	2.0	15.37	14.75	0.00	1.35
ROOFER	All	BLD		44.60	48.60	1.5	1.5	2.0	2.0	10.58	13.31	0.00	0.70
SHEETMETAL WORKER	All	BLD		45.50	49.14	1.5	1.5	2.0	2.0	11.70	25.58	0.00	0.86
SIGN HANGER	All	BLD		32.68	35.29	1.5	1.5	2.0	2.0	5.40	3.75	0.00	0.00
SPRINKLER FITTER	All	BLD		50.15	52.65	1.5	1.5	2.0	2.0	13.50	16.60	0.00	0.65
STEEL ERECTOR	All	ALL		42.07	44.07	2.0	2.0	2.0	2.0	13.45	19.59	0.00	0.35
STONE MASON	All	BLD		46.88	51.57	1.5	1.5	2.0	2.0	10.85	19.31	0.00	0.95
TERRAZZO FINISHER	All	BLD		42.54	42.54	1.5	1.5	2.0	2.0	11.00	14.64	0.00	0.88
TERRAZZO MASON	All	BLD		46.38	49.88	1.5	1.5	2.0	2.0	11.00	16.09	0.00	0.93
TILE MASON	All	BLD		47.50	51.50	1.5	1.5	2.0	2.0	11.00	16.06	0.00	0.93
TRAFFIC SAFETY WORKER	All	HWY		37.75	39.35	1.5	1.5	2.0	2.0	9.30	9.87	0.00	0.30
TRUCK DRIVER	E	ALL	1	36.45	37.10	1.5	1.5	2.0	2.0	9.68	13.25	0.00	0.15
TRUCK DRIVER	E	ALL	2	36.70	37.10	1.5	1.5	2.0	2.0	9.68	13.25	0.00	0.15
TRUCK DRIVER	E	ALL	3	36.90	37.10	1.5	1.5	2.0	2.0	9.68	13.25	0.00	0.15
TRUCK DRIVER	E	ALL	4	37.10	37.10	1.5	1.5	2.0	2.0	9.68	13.25	0.00	0.15
TRUCK DRIVER	W	ALL	1	37.36	37.91	1.5	1.5	2.0	2.0	9.00	11.64	0.00	0.15

TRUCK DRIVER	W	ALL	2	37.51	37.91	1.5	1.5	2.0	2.0	9.00	11.64	0.00	0.15	
TRUCK DRIVER	W	ALL	3	37.71	37.91	1.5	1.5	2.0	2.0	9.00	11.64	0.00	0.15	
TRUCK DRIVER	W	ALL	4	37.91	37.91	1.5	1.5	2.0	2.0	9.00	11.64	0.00	0.15	
TUCKPOINTER	All	BLD		46.50	47.50	1.5	1.5	2.0	2.0	8.34	18.40	0.00	0.93	

Legend

Rg Region

Type Trade Type - All,Highway,Building,Floating,Oil & Chip,Rivers

C Class

Base Base Wage Rate

OT M-F Unless otherwise noted, OT pay is required for any hour greater than 8 worked each day, Mon through Fri. The number listed is the multiple of the base wage.

OT Sa Overtime pay required for every hour worked on Saturdays

OT Su Overtime pay required for every hour worked on Sundays

OT Hol Overtime pay required for every hour worked on Holidays

H/W Health/Welfare benefit

Vac Vacation

Trng Training

Other Ins Employer hourly cost for any other type(s) of insurance provided for benefit of worker.

Explanations COOK COUNTY

The following list is considered as those days for which holiday rates of wages for work performed apply: New Years Day, Memorial Day, Fourth of July, Labor Day, Thanksgiving Day, Christmas Day and Veterans Day in some classifications/counties. Generally, any of these holidays which fall on a Sunday is celebrated on the following Monday. This then makes work performed on that Monday payable at the appropriate overtime rate for holiday pay. Common practice in a given local may alter certain days of celebration. If in doubt, please check with IDOL.

TRUCK DRIVERS (WEST) - That part of the county West of Barrington Road.

EXPLANATION OF CLASSES

ASBESTOS - GENERAL - removal of asbestos material/mold and hazardous materials from any place in a building, including mechanical systems where those mechanical systems are to be removed. This includes the removal of asbestos materials/mold and hazardous materials from ductwork or pipes in a building when the building is to be demolished at the time or at some close future date. ASBESTOS - MECHANICAL - removal of asbestos material from mechanical systems, such as pipes, ducts, and boilers, where the mechanical systems are to remain.

CERAMIC TILE FINISHER

The grouting, cleaning, and polishing of all classes of tile, whether for interior or exterior purposes, all burned, glazed or unglazed products; all composition materials, granite tiles, warning detectable tiles, cement tiles, epoxy composite materials, pavers, glass, mosaics, fiberglass, and all substitute materials, for tile made in tile-like units; all mixtures in tile like form of cement, metals, and other materials that are for and intended for use as a finished floor surface, stair treads, promenade roofs, walks, walls, ceilings, swimming pools, and all other places where tile is to form a finished interior or exterior. The mixing of all setting mortars including but not limited to thin-set mortars, epoxies, wall mud, and any other sand and cement mixtures or adhesives when used in the preparation, installation, repair, or maintenance of tile and/or similar materials. The handling and unloading of all

sand, cement, lime, tile, fixtures, equipment, adhesives, or any other materials to be used in the preparation, installation, repair, or maintenance of tile and/or similar materials. Ceramic Tile Finishers shall fill all joints and voids regardless of method on all tile work, particularly and especially after installation of said tile work. Application of any and all protective coverings to all types of tile installations including, but not be limited to, all soap compounds, paper products, tapes, and all polyethylene coverings, plywood, masonite, cardboard, and any new type of products that may be used to protect tile installations, Blastrac equipment, and all floor scarifying equipment used in preparing floors to receive tile. The clean up and removal of all waste and materials. All demolition of existing tile floors and walls to be re-tiled.

COMMUNICATIONS ELECTRICIAN

Installation, operation, inspection, maintenance, repair and service of radio, television, recording, voice sound vision production and reproduction, telephone and telephone interconnect, facsimile, data apparatus, coaxial, fibre optic and wireless equipment, appliances and systems used for the transmission and reception of signals of any nature, business, domestic, commercial, education, entertainment, and residential purposes, including but not limited to, communication and telephone, electronic and sound equipment, fibre optic and data communication systems, and the performance of any task directly related to such installation or service whether at new or existing sites, such tasks to include the placing of wire and cable and electrical power conduit or other raceway work within the equipment room and pulling wire and/or cable through conduit and the installation of any incidental conduit, such that the employees covered hereby can complete any job in full.

MARBLE FINISHER

Loading and unloading trucks, distribution of all materials (all stone, sand, etc.), stocking of floors with material, performing all rigging for heavy work, the handling of all material that may be needed for the installation of such materials, building of scaffolding, polishing if needed, patching, waxing of material if damaged, pointing up, caulking, grouting and cleaning of marble, holding water on diamond or Carborundum blade or saw for setters cutting, use of tub saw or any other saw needed for preparation of material, drilling of holes for wires that anchor material set by setters, mixing up of molding plaster for installation of material, mixing up thin set for the installation of material, mixing up of sand to cement for the installation of material and such other work as may be required in helping a Marble Setter in the handling of all material in the erection or installation of interior marble, slate, travertine, art marble, serpentine, alberene stone, blue stone, granite and other stones (meaning as to stone any foreign or domestic materials as are specified and used in building interiors and exteriors and customarily known as stone in the trade), carrara, sanionyx, vitrolite and similar opaque glass and the laying of all marble tile, terrazzo tile, slate tile and precast tile, steps, risers treads, base, or any other materials that may be used as substitutes for any of the aforementioned materials and which are used on interior and exterior which are installed in a similar manner.

MATERIAL TESTER I: Hand coring and drilling for testing of materials; field inspection of uncured concrete and asphalt.

MATERIAL TESTER II: Field inspection of welds, structural steel, fireproofing, masonry, soil, facade, reinforcing steel, formwork, cured concrete, and concrete and asphalt batch plants; adjusting proportions of bituminous mixtures.

OPERATING ENGINEER - BUILDING

Class 1. Asphalt Plant; Asphalt Spreader; Autograde; Backhoes with Caisson Attachment; Batch Plant; Benoto (requires Two Engineers); Boiler and Throttle Valve; Caisson Rigs; Central Redi-Mix Plant; Combination Back Hoe Front End-loader Machine; Compressor and Throttle Valve; Concrete Breaker (Truck Mounted); Concrete Conveyor; Concrete Conveyor (Truck Mounted); Concrete Paver Over 27E cu. ft; Concrete Paver 27E cu. ft. and Under: Concrete Placer; Concrete Placing Boom; Concrete Pump (Truck Mounted); Concrete Tower; Cranes, All; Cranes, Hammerhead; Cranes, (GCI and similar Type); Creter Crane; Spider Crane; Crusher, Stone, etc.; Derricks, All; Derricks, Traveling; Formless Curb and Gutter Machine; Grader, Elevating; Grouting Machines; Heavy Duty Self-Propelled Transporter or Prime Mover; Highlift Shovels or Front Endloader 2-1/4 yd. and over; Hoists, Elevators, outside type rack and pinion and similar machines; Hoists, One, Two and Three Drum; Hoists, Two Tugger One Floor; Hydraulic Backhoes; Hydraulic Boom Trucks; Hydro Vac (and similar equipment); Locomotives, All; Motor Patrol; Lubrication Technician;

Manipulators; Pile Drivers and Skid Rig; Post Hole Digger; Pre-Stress Machine; Pump Cretes Dual Ram; Pump Cretes: Squeeze Cretes-Screw Type Pumps; Gypsum Bulker and Pump; Raised and Blind Hole Drill; Roto Mill Grinder; Scoops - Tractor Drawn; Slip-Form Paver; Straddle Buggies; Operation of Tie Back Machine; Tournapull; Tractor with Boom and Side Boom; Trenching Machines.

Class 2. Boilers; Broom, All Power Propelled; Bulldozers; Concrete Mixer (Two Bag and Over); Conveyor, Portable; Forklift Trucks; Highlift Shovels or Front Endloaders under 2-1/4 yd.; Hoists, Automatic; Hoists, Inside Elevators; Hoists, Sewer Dragging Machine; Hoists, Tugger Single Drum; Laser Screed; Rock Drill (Self-Propelled); Rock Drill (Truck Mounted); Rollers, All; Steam Generators; Tractors, All; Tractor Drawn Vibratory Roller; Winch Trucks with "A" Frame.

Class 3. Air Compressor; Combination Small Equipment Operator; Generators; Heaters, Mechanical; Hoists, Inside Elevators (remodeling or renovation work); Hydraulic Power Units (Pile Driving, Extracting, and Drilling); Pumps, over 3" (1 to 3 not to exceed a total of 300 ft.); Low Boys; Pumps, Well Points; Welding Machines (2 through 5); Winches, 4 Small Electric Drill Winches.

Class 4. Bobcats and/or other Skid Steer Loaders; Oilers; and Brick Forklift.

Class 5. Assistant Craft Foreman.

Class 6. Gradall.

Class 7. Mechanics; Welders.

OPERATING ENGINEERS - HIGHWAY CONSTRUCTION

Class 1. Asphalt Plant; Asphalt Heater and Planer Combination; Asphalt Heater Scarfire; Asphalt Spreader; Autograder/GOMACO or other similar type machines; ABG Paver; Backhoes with Caisson Attachment; Ballast Regulator; Belt Loader; Caisson Rigs; Car Dumper; Central Redi-Mix Plant; Combination Backhoe Front Endloader Machine, (1 cu. yd. Backhoe Bucket or over or with attachments); Concrete Breaker (Truck Mounted); Concrete Conveyor; Concrete Paver over 27E cu. ft.; Concrete Placer; Concrete Tube Float; Cranes, all attachments; Cranes, Tower Cranes of all types: Creter Crane: Spider Crane; Crusher, Stone, etc.; Derricks, All; Derrick Boats; Derricks, Traveling; Dredges; Elevators, Outside type Rack & Pinion and Similar Machines; Formless Curb and Gutter Machine; Grader, Elevating; Grader, Motor Grader, Motor Patrol, Auto Patrol, Form Grader, Pull Grader, Subgrader; Guard Rail Post Driver Truck Mounted; Hoists, One, Two and Three Drum; Heavy Duty Self-Propelled Transporter or Prime Mover; Hydraulic Backhoes; Backhoes with shear attachments up to 40' of boom reach; Lubrication Technician; Manipulators; Mucking Machine; Pile Drivers and Skid Rig; Pre-Stress Machine; Pump Cretes Dual Ram; Rock Drill - Crawler or Skid Rig; Rock Drill - Truck Mounted; Rock/Track Tamper; Roto Mill Grinder; Slip-Form Paver; Snow Melters; Soil Test Drill Rig (Truck Mounted); Straddle Buggies; Hydraulic Telescoping Form (Tunnel); Operation of Tieback Machine; Tractor Drawn Belt Loader; Tractor Drawn Belt Loader (with attached pusher - two engineers); Tractor with Boom; Tractaire with Attachments; Traffic Barrier Transfer Machine; Trenching; Truck Mounted Concrete Pump with Boom; Raised or Blind Hole Drills (Tunnel Shaft); Underground Boring and/or Mining Machines 5 ft. in diameter and over tunnel, etc; Underground Boring and/or Mining Machines under 5 ft. in diameter; Wheel Excavator; Widener (APSCO).

Class 2. Batch Plant; Bituminous Mixer; Boiler and Throttle Valve; Bulldozers; Car Loader Trailing Conveyors; Combination Backhoe Front Endloader Machine (Less than 1 cu. yd. Backhoe Bucket or over or with attachments); Compressor and Throttle Valve; Compressor, Common Receiver (3); Concrete Breaker or Hydro Hammer; Concrete Grinding Machine; Concrete Mixer or Paver 7S Series to and including 27 cu. ft.; Concrete Spreader; Concrete Curing Machine, Burlap Machine, Belting Machine and Sealing Machine; Concrete Wheel Saw; Conveyor Muck Cars (Haglund or Similar Type); Drills, All; Finishing Machine - Concrete; Highlift Shovels or Front Endloader; Hoist - Sewer Dragging Machine; Hydraulic Boom Trucks (All Attachments); Hydro-Blaster; Hydro Excavating (excluding hose work); Laser Screed; All Locomotives, Dinky; Off-Road Hauling Units (including articulating) Non Self-Loading Ejection Dump; Pump Cretes: Squeeze Cretes - Screw Type Pumps, Gypsum Bulker and Pump; Roller, Asphalt; Rotary Snow Plows; Rototiller, Seaman, etc., self-propelled; Self-Propelled Compactor; Spreader - Chip - Stone, etc.; Scraper - Single/Twin

Engine/Push and Pull; Scraper - Prime Mover in Tandem (Regardless of Size); Tractors pulling attachments, Sheeps Foot, Disc, Compactor, etc.; Tug Boats.

Class 3. Boilers; Brooms, All Power Propelled; Cement Supply Tender; Compressor, Common Receiver (2); Concrete Mixer (Two Bag and Over); Conveyor, Portable; Farm-Type Tractors Used for Mowing, Seeding, etc.; Forklift Trucks; Grouting Machine; Hoists, Automatic; Hoists, All Elevators; Hoists, Tugger Single Drum; Jeep Diggers; Low Boys; Pipe Jacking Machines; Post-Hole Digger; Power Saw, Concrete Power Driven; Pug Mills; Rollers, other than Asphalt; Seed and Straw Blower; Steam Generators; Stump Machine; Winch Trucks with "A" Frame; Work Boats; Tamper-Form-Motor Driven.

Class 4. Air Compressor; Combination - Small Equipment Operator; Directional Boring Machine; Generators; Heaters, Mechanical; Hydraulic Power Unit (Pile Driving, Extracting, or Drilling); Light Plants, All (1 through 5); Pumps, over 3" (1 to 3 not to exceed a total of 300 ft.); Pumps, Well Points; Vacuum Trucks (excluding hose work); Welding Machines (2 through 5); Winches, 4 Small Electric Drill Winches.

Class 5. SkidSteer Loader (all); Brick Forklifts; Oilers.

Class 6. Field Mechanics and Field Welders

Class 7. Dowell Machine with Air Compressor; Gradall and machines of like nature.

OPERATING ENGINEER - FLOATING

Class 1. Craft Foreman; Master Mechanic; Diver/Wet Tender; Engineer; Engineer (Hydraulic Dredge).

Class 2. Crane/Backhoe Operator; Boat Operator with towing endorsement; Mechanic/Welder; Assistant Engineer (Hydraulic Dredge); Leverman (Hydraulic Dredge); Diver Tender.

Class 3. Deck Equipment Operator, Machineryman, Maintenance of Crane (over 50 ton capacity) or Backhoe (115,000 lbs. or more); Tug/Launch Operator; Loader/Dozer and like equipment on Barge, Breakwater Wall, Slip/Dock, or Scow, Deck Machinery, etc.

Class 4. Deck Equipment Operator, Machineryman/Fireman (4 Equipment Units or More); Off Road Trucks; Deck Hand, Tug Engineer, Crane Maintenance (50 Ton Capacity and Under) or Backhoe Weighing (115,000 pounds or less); Assistant Tug Operator.

Class 5. Friction or Lattice Boom Cranes.

Class 6. ROV Pilot, ROV Tender

TERRAZZO FINISHER

The handling of sand, cement, marble chips, and all other materials that may be used by the Mosaic Terrazzo Mechanic, and the mixing, grinding, grouting, cleaning and sealing of all Marble, Mosaic, and Terrazzo work, floors, base, stairs, and wainscoting by hand or machine, and in addition, assisting and aiding Marble, Masonic, and Terrazzo Mechanics.

TRAFFIC SAFETY

Effective November 30, 2018, the description of the traffic safety worker trade in this County is as follows: Work associated with barricades, horses and drums used to reduce lane usage on highway work, the installation and removal of temporary, non-temporary or permanent lane, pavement or roadway markings, and the installation and removal of temporary road signs.

TRUCK DRIVER - BUILDING, HEAVY AND HIGHWAY CONSTRUCTION - EAST & WEST

Class 1. Two or three Axle Trucks. A-frame Truck when used for transportation purposes; Air Compressors and Welding Machines, including those pulled by cars, pick-up trucks and tractors; Ambulances; Batch Gate Lockers; Batch Hopperman; Car and Truck Washers; Carry-alls; Fork Lifts and Hoisters; Helpers; Mechanics Helpers and Greasers; Oil Distributors 2-man operation; Pavement Breakers; Pole Trailer, up to 40 feet; Power Mower Tractors; Self-propelled Chip Spreader; Skipman; Slurry Trucks, 2-man operation; Slurry Truck Conveyor Operation, 2 or 3 man; Teamsters; Unskilled Dumpman; and Truck Drivers hauling warning lights, barricades, and portable toilets on the job site.

Class 2. Four axle trucks; Dump Crets and Adgetors under 7 yards; Dumpsters, Track Trucks, Euclids, Hug Bottom Dump Turnapulls or Turntrailers when pulling other than self-loading equipment or similar equipment under 16 cubic yards; Mixer Trucks under 7 yards; Ready-mix Plant Hopper Operator, and Winch Trucks, 2 Axles.

Class 3. Five axle trucks; Dump Crets and Adgetors 7 yards and over; Dumpsters, Track Trucks, Euclids, Hug Bottom Dump Turntrailers or turnapulls when pulling other than self-loading equipment or similar equipment over 16 cubic yards; Explosives and/or Fission Material Trucks; Mixer Trucks 7 yards or over; Mobile Cranes while in transit; Oil Distributors, 1-man operation; Pole Trailer, over 40 feet; Pole and Expandable Trailers hauling material over 50 feet long; Slurry trucks, 1-man operation; Winch trucks, 3 axles or more; Mechanic--Truck Welder and Truck Painter.

Class 4. Six axle trucks; Dual-purpose vehicles, such as mounted crane trucks with hoist and accessories; Foreman; Master Mechanic; Self-loading equipment like P.B. and trucks with scoops on the front.

Other Classifications of Work:

For definitions of classifications not otherwise set out, the Department generally has on file such definitions which are available. If a task to be performed is not subject to one of the classifications of pay set out, the Department will upon being contacted state which neighboring county has such a classification and provide such rate, such rate being deemed to exist by reference in this document. If no neighboring county rate applies to the task, the Department shall undertake a special determination, such special determination being then deemed to have existed under this determination. If a project requires these, or any classification not listed, please contact IDOL at 217-782-1710 for wage rates or clarifications.

LANDSCAPING

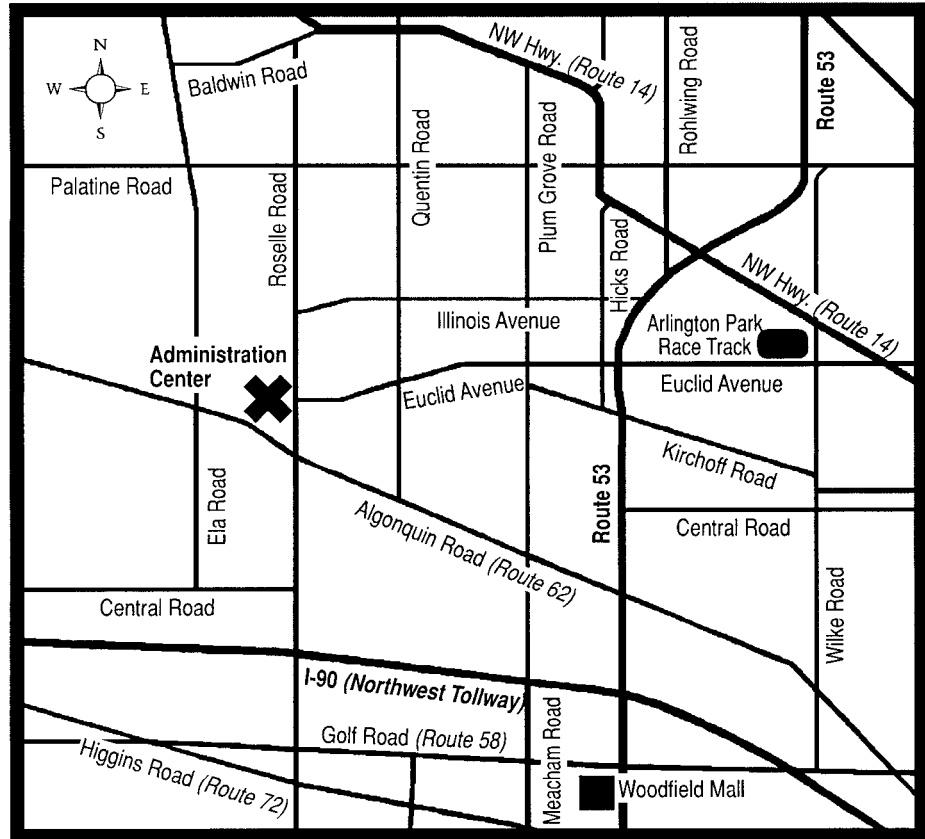
Landscaping work falls under the existing classifications for laborer, operating engineer and truck driver. The work performed by landscape plantsman and landscape laborer is covered by the existing classification of laborer. The work performed by landscape operators (regardless of equipment used or its size) is covered by the classifications of operating engineer. The work performed by landscape truck drivers (regardless of size of truck driven) is covered by the classifications of truck driver.

MATERIAL TESTER & MATERIAL TESTER/INSPECTOR I AND II

Notwithstanding the difference in the classification title, the classification entitled "Material Tester I" involves the same job duties as the classification entitled "Material Tester/Inspector I". Likewise, the classification entitled "Material Tester II" involves the same job duties as the classification entitled "Material Tester/Inspector II".

Directions to
G.A. McElroy Administration Center
1750 South Roselle Road · Palatine, Illinois

Township High School
District 211
 (847) 755-6600
 Daniel E. Cates,
Superintendent



From the North:

- Take Route 53 south to Euclid Avenue
- Exit Euclid Avenue west
- Euclid Avenue west to Roselle Road
- Left turn (south) on Roselle Road
- Administration Center is on the right side (between Euclid Road and Algonquin Road)

From Chicago:

- Take I-90 west to Roselle Road
- Exit Roselle Road north
- Administration Center is on the left side (between Euclid Road and Algonquin Road)

From the South:

- Take I-290 or I-355 north to Route 53 north
- Route 53 north to Euclid Avenue
- Exit Euclid Avenue west
- Euclid Avenue west to Roselle Road
- Left turn (south) on Roselle Road
- Administration Center is on the right side (between Euclid Road and Algonquin Road)

From the West:

- Take I-90 east to Route 53 north
- Route 53 north to Euclid Avenue
- Exit Euclid Avenue west
- Euclid Avenue west to Roselle Road
- Left turn (south) on Roselle Road
- Administration Center is on the right side (between Euclid Road and Algonquin Road)