

community

RESOURCES

SCHAUMBURG TOWNSHIP

Ph: 847-884-0030
1 Illinois Boulevard
Hoffman Estates, IL 60169
schaumburgtownship.org

Disability, welfare,
counseling, senior
support,
transportation,
veteran services

NORTHWEST COMPASS

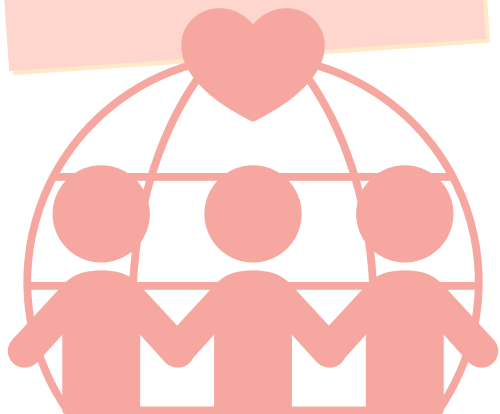
Ph: 847-392-2344
A1300 W Northwest Hwy,
Mt Prospect, IL 60056
info@northwestcompass.org

*Housing, financial support, food,
employment services*

PARTNERS FOR OUR COMMUNITIES (POC)

Ph: 847-776-9500
1585 N. Rand Road
Palatine, IL 60074

*Adult leadership, employment,
health & wellness, youth programs*



WILLOW CREEK

67 Algonquin Rd., Entrance G
South Barrington, IL 60010
carecenter@willowcreek.org

Tuesday

10a-12p; 6:30p -7:30p

Wednesday

6:30p-7:30p

Thursday

10a-12p; 6:30p-7:30p

Saturday

8a-10a

Food Pantries

SCHAUMBURG TOWNSHIP

By Appointment!
847-285-4503

Bring mail as proof of residency!

Monday

10a-3p

Tuesday

9a-2p

Wednesday

9a-2p

Thursday

11a-5p

Friday

10a-3p